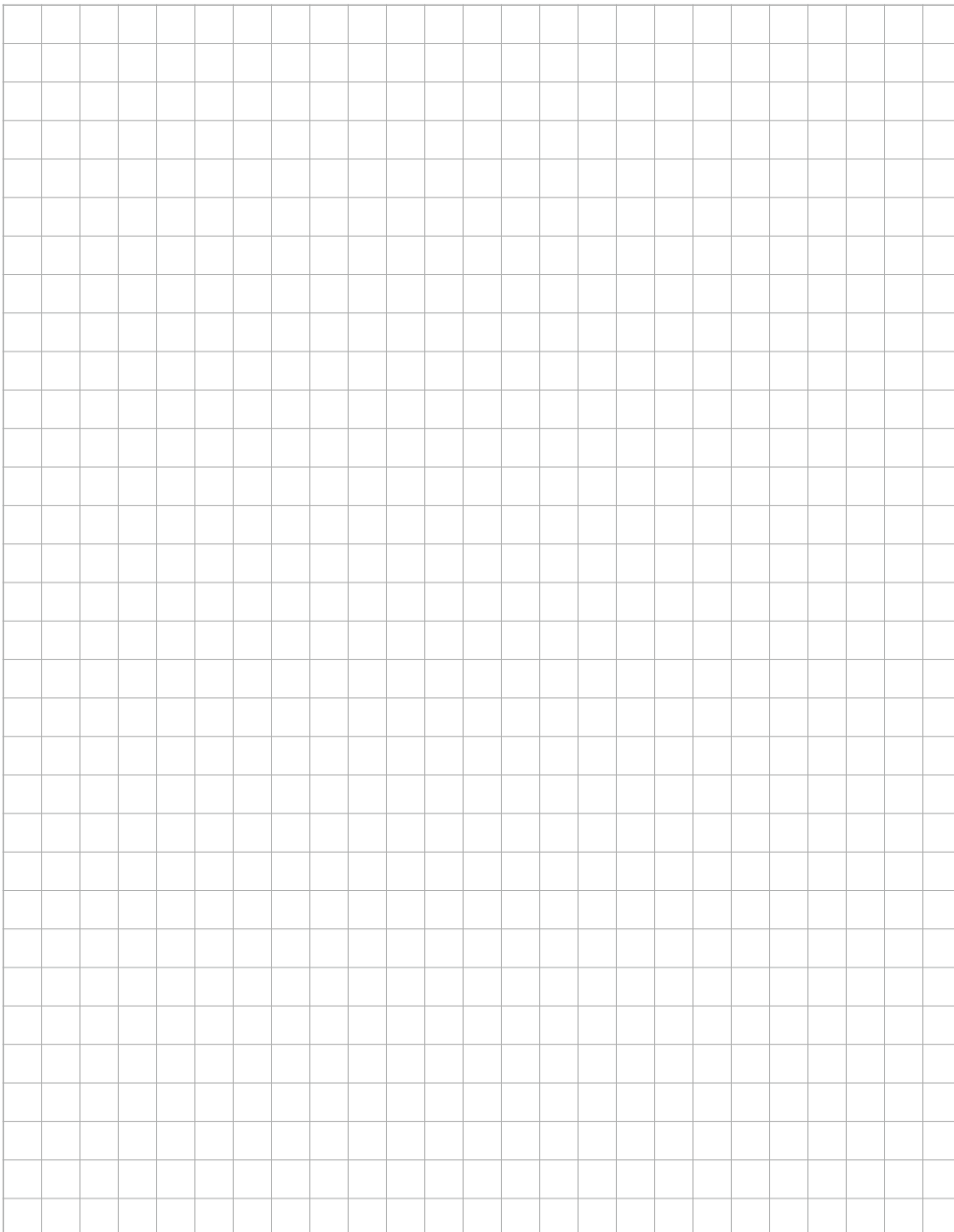


Notes



SUNEX®



FISH S4 U
Buffer tank without coils

OPERATING MANUAL

Buffer tanks



Do not start the unit until you have read the manual. The pictures of the products featured in this manual may differ from the products on sale.

Buffer tightness

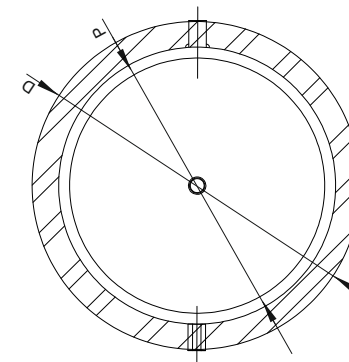
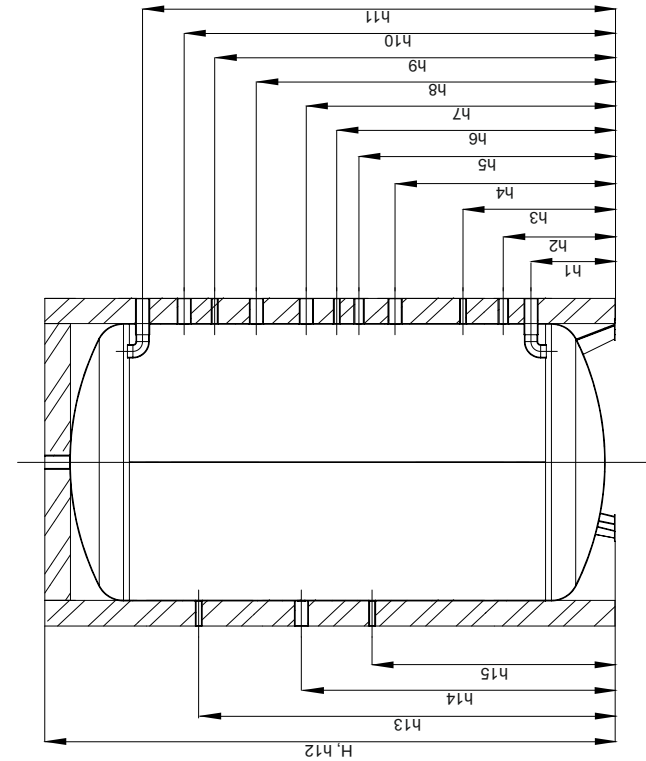
It is necessary to check the buffer and system for leaks after filling.

◆ OPERATING REMARKS

1. The buffer must be transported in a vertical position.
2. The buffer should be installed vertically on a durable, strong and leveled surface.
3. The devices should be stored indoors in a relatively dry place not exposed to direct water (such as rain) and sunlight.
4. Do not operate the buffer, without a working safety valve (the operation of the safety valve should be checked every 14 days by turning the cap to the right or left so that there is an outflow from the side discharge outlet to the outside. Then turn the cap in the opposite direction until it snaps into the previous position and press it against the valve body. If there is no outflow of water when the cap is turned, the valve is faulty. If after turning the cap and returning to the previous position set continuous leakage of water, the valve plug is contaminated and the valve should be flushed several times, opening the outflow by turning the cap. Attention: the possibility of hot water outflow. The manufacturer is not responsible for the malfunction of the safety valve caused by incorrect installation and installation errors.
5. Water intended for filling the heating system should not contain mechanical and organic impurities and should meet the requirements of PN-93/C04607. Failure to comply with the requirements for the quality of heating water may result in loss of warranty. Heating water should have the following parameters:
 - pH: $8,0 \div 9,5$ ($8,0 \div 8,5$ in installations with aluminum radiators)
 - total hardness: $< 11,2$ °n
 - free oxygen content $< 0,05$ mg/l
 - chloride content < 60 mg/l
6. SUNEX S.A. reserves the right to make modifications to the design without prior notice to customers.

◆ MALFUNCTIONS AND REMEDIES

No.	MALFUNCTION	REASON	REPAIR METHOD
1	Safety valve does not open (even when blowing out)	Safety valve sealed	Clean the valve or replace it
2	The safety valve is leaking	1) Safety valve contact surface contaminated or damaged 2) Excessive water pressure in the network	1) Clean or grind the contact surface of the safety valve 2) Use a pressure reducer



◆ FISH S4 U (800, 1000, 1500, 2000l)

◆ TECHNICAL SPECIFICATIONS

	FISH S4 800 U	FISH S4 1000 U	FISH S4 1500 U	FISH S4 2000 U
Series	800	1000	1500	2000
Storage capacity	734	856	1388	2046
Max. permissible temperature	°C	95	95	95
Max. permissible pressure	bar	3	3	3
Insulation	mm	80	80	80
Diameter with insulation	mm	950	1160	1360
Diameter without insulation	mm	790	790	1000
Device height	mm	1738	1988	2055
Connection	mm	260	260	303
Additional connection	mm	360	360	403
Sensor 1	mm	515	545	576
Connection	mm	670	730	793
Additional connection	mm	820	880	923
Sensor 2	mm	-	-	1003
Connection	mm	-	-	1113
Connection	mm	980	1060	1293
Sensor 3	mm	1160	1360	1443
Connection	mm	1260	1480	1521
Connection	mm	1413	1652	1703
Venting	mm	1738	1988	2055
Sensor 4	mm	1120	1500	1500
Electric heater	mm	920	1130	1130
Sensor 5	mm	570	580	875

Connections				
Connection	Rp	1 1/2"	1 1/2"	1 1/2"
Additional connection	Rp	1"	1"	1"
Electric heater	Rp	1 1/2"	1 1/2"	1 1/2"
Sensor	Rp	1/2"	1/2"	1/2"
Vent	mm	1 1/2"	1 1/2"	1 1/2"
Weight	kg	99	106	233

R - external thread, Rp - internal thread

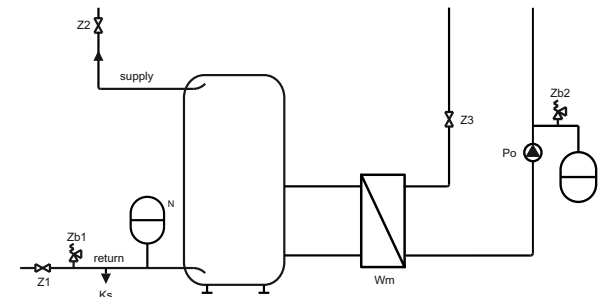
◆ MAINTENANCE

1. Safety fittings:
To avoid possible overpressure, it is necessary to check once a month the proper functioning of the safety fittings.
2. The housing can be cleaned with soap and water.

◆ ENVIRONMENTAL PROTECTION

Used appliances contain recyclable materials that must be sent for processing. The components are easily disassembled. In this way, the various components can be sorted and sent for recycling or disposal.

◆ HYDRAULIC CONNECTIONS OF BUFFER TANKS



Zb1 - tank safety valve
Zb2 - solar systems safety valve
Z1 - shut-off valve on cold water supply
Z2 - shut-off valve on hot water outlet
Z3 - shut-off valve at the flow of the medium into the coil
Po - circulation pump
N - expansion tank
Ks - drain plug
Wm - external exchanger

◆ TECHNICAL SPECIFICATIONS

FISH S4 200 U FISH S4 300 U FISH S4 500 U

Series	200	300	500
Storage capacity	201	339	477
Max. permissible temperature	95	95	95
Max. permissible pressure	3	3	3
Insulation	80	80	80
Diameter with insulation	660	760	810
Tank diameter (without insulation)	500	600	650
Device height	1266	1440	1701
Water drain	76	80	72
Connection	316	275	400
Sensor 1	316	275	400
Connection	316	275	400
Sensor 2	554	575	740
Connection	554	575	740
Sensor 3	792	875	1079
Connection	792	875	1079
Sensor 4	1030	1175	1418
Connection	1030	1175	1418
Air vent	1271	1445	1706
Connections			
Water drain	Rp	1 1/2"	1 1/2"
Connection	Rp	1 1/2"	1 1/2"
Sensor	Rp	1/2"	1/2"
Air Vent	mm	1 1/2"	1 1/2"
Weight	kg	35	60
R - external thread, Rp - internal thread			

◆ FISH S4 U (200, 300, 500l)

