



Designed for
a modern heating room

Hygienic tank with one coil

INDEX

FISH S9 300 P	508 512 230
FISH S9 500 P	508 512 250
FISH S9 800 P	508 512 280
FISH S9 1000 P	508 512 210

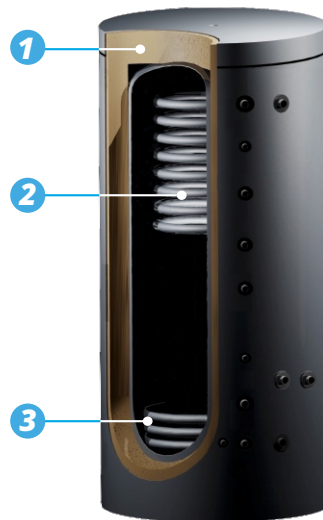
The hygienic tank with one coil is used for domestic hot water preparation and hot water buffering for space heating. Hygienic tank: flexible corrugated tube hot water coil made of high-grade stainless steel + steel buffer tank for supplying the space heating system. The flow-through water heating in the large-area stainless steel corrugated tube heat exchanger makes it possible to supply hot yet always fresh water for domestic use. The flow-through heating ensures a sediment-free hot water flow. The tank is equipped with an additional coil for connecting an additional heat source.

Thermal insulation

The thermal insulation of the hygienic tank consists of a layer of soft foam and a PVC foil jacket.

Technical description

- > Tank material: **S235 JRG**
- > Maximum operating pressure of the tank: **5 bar**
- > Maximum operating temperature of the tank: **95°C**
- > Insulation: **100 mm**
- > Outer coat: **grey**
- > DHW heat exchangers: corrugated pipe (**stainless steel**)



1 Insulation: soft foam for **excellent thermal insulation**

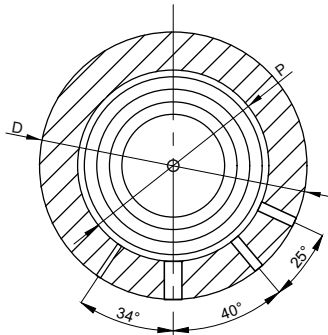
3 **Efficient coil** for solar installation

2 **Efficient coil with** special design for DHW

Series			300	500	800	1000
Max. permissible temp. (tank/exchanger/DHW pipe)	°C		95/95/95	95/95/95	95/95/95	95/95/95
Max. permissible press. (tank/exchanger/hot water pipe)	bar		5/10/10	5/10/10	5/10/10	5/10/10
Capacity (heat exchanger/hot water pipe)	l		8,3/31	12,6/31	12,6/31	12,6/31
Area (heat exchanger/hot water pipe)	m ²		2,1/7,5	3,2/7,5	3,2/7,5	3,2/7,5
Insulation	mm		100	100	100	100
Diameter with insulation	D	mm	700	800	990	990
Tank diameter (without insulation)	P	mm	500	600	790	790
Height/diagonal	H	mm	1750/1885	2100/2110	1920/1900	2100/2110
Sensor	h1	mm	215	220	240	240
Hot water pipe (inlet)	h2	mm	220	220	240	240
Solar exchanger (return)	h3	mm	490	220	240	240
Connection	h4	mm	375	220	240	240
Sensor	h5	mm	-	978	690	750
Connection	h6	mm	-	978	690	750
Solar exchanger (supply)	h7	mm	490	780	700	800
Sensor	h8	mm	525	1000	915	1020
Connection	h9	mm	795	1000	915	1020
Sensor	h10	mm	1305	1560	1590	1580
Hot water pipe (outlet)	h11	mm	1510	1560	1590	1580
Connection	h12	mm	220	1560	1590	1580
Ventilation	h13	mm	1690	1990	1860	2040
Connection	h14	mm	1135	1740	1590	1780
Connection	h15	mm	1505	1230	1140	1260
Connection	h16	mm	945	978	690	750
Connection	h17	mm	-	220	240	240
Connections						
Connection	h4	G	1 1/2"	1 1/2"	1 1/2"	1 1/2"
Connection		G	1"	1 1/2"	1 1/2"	1 1/2"
Sensor		G	1/2"	1"	1"	1"
Solar heat exchanger (supply/return)		G	1" / 1"	1" / 1"	1" / 1"	1" / 1"
Hot water pipe (inlet/outlet)		G	1" / 1"	1" / 1"	1" / 1"	1" / 1"
Ventilation		G	1 1/2"	1 1/2"	1 1/2"	1 1/2"
Weight	kg		86	110	140	160

G - internal thread type G

Capacity 300l



Capacity 500l 800l 1000l

