

SUNEX[®]



Leading manufacturer

of innovative solutions based on renewable energies.

NEXUS INSYGE HYDRA FISH

SUNEX[®]





NEXUS **M** PRO p.4



NEXUS **M** EVI p.6



NEXUS **SPLIT** EVI p.8

Expand **the possibilities** of NEXUS heat pumps

| | |
|--|------|
| The entire heating room in one unit HYDRA TOWER | p.10 |
| Hydraulic module HYDRA BOX | p.12 |
| The module for use with collectors: HYDRA SOL | p.14 |
| Intelligent control unit INSYG ALFA | p.15 |
| Web control INSYG CLOUD | p.15 |
| Specially adapted FISH TANK | p.16 |
| HYDRA pump groups and distributors..... | p.17 |

Discover a complete range of **equipment for your home**

| | |
|--|------|
| NEXUS M PRO standard version | p.18 |
| NEXUS M PRO with HYDRABOX | p.19 |
| NEXUS M PRO with HYDRASOL | p.20 |
| NEXUS M PRO with HYDRA BOX and HYDRASOL | p.21 |

| | |
|--|------|
| NEXUS M EVI standard version | p.22 |
| NEXUS M EVI with HYDRABOX | p.23 |
| NEXUS M EVI with HYDRASOL | p.24 |
| NEXUS M EVI with HYDRA BOX and HYDRASOL | p.25 |

| | |
|---|------|
| NEXUS Split EVI standard version | p.26 |
| NEXUS Split EVI with HYDRASOL | p.27 |

| | |
|---|---------|
| Detailed hydraulic diagrams..... | p.28-32 |
|---|---------|



NEXUS / **M**
PRO

HEAT PUMP FOR CENTRAL HEATING + DOMESTIC HOT WATER

THE NEXUS PRO IS THE INNOVATIVE PUMP OF THE FUTURE. THE PUMP WORKS WITH THE NATURAL REFRIGERANT R290 AND AN INVERTER COMPRESSOR WHOSE CONTROLLED OPERATION ENABLES THE HEATING OUTPUT TO BE ADAPTED TO THE CURRENT HEAT REQUIREMENT OF THE BUILDING.



**ENERGY EFFICIENCY
CLASS A+++**



COMPACT DESIGN

R290

**ENVIRONMENTALLY
FRIENDLY REFRIGERANT**



HIGH EFFICIENCY



SILENT OPERATION



INTERNET CONTROL



INSYG/ALFA

INTELLIGENT CONTROL

INSYG/CLOUD

CLOUD CONTROL POSSIBLE

HYDRA/BOX

COOPERATION WITH THE HYDRAULIC MODULE

HYDRA/SOL

COOPERATION WITH THE SOLAR MODULE

The automation ensures infinitely variable performance control of the compressor, fan and circulation pump.

The standard control unit regulates the heat pump operation and the heating circuits for central heating and domestic hot water.

The heat pump can be operated in cooling mode. However, it is recommended to use this mode in combination with floor heating.

Integrated temperature and pressure protection of the refrigerant circuit.

The evaporator with a hydrophilic surface is less susceptible to icing, defrosts effectively and is better protected against dirt deposits.

Active frost protection of the water circuit even during cooling operation (requires electrical power supply)

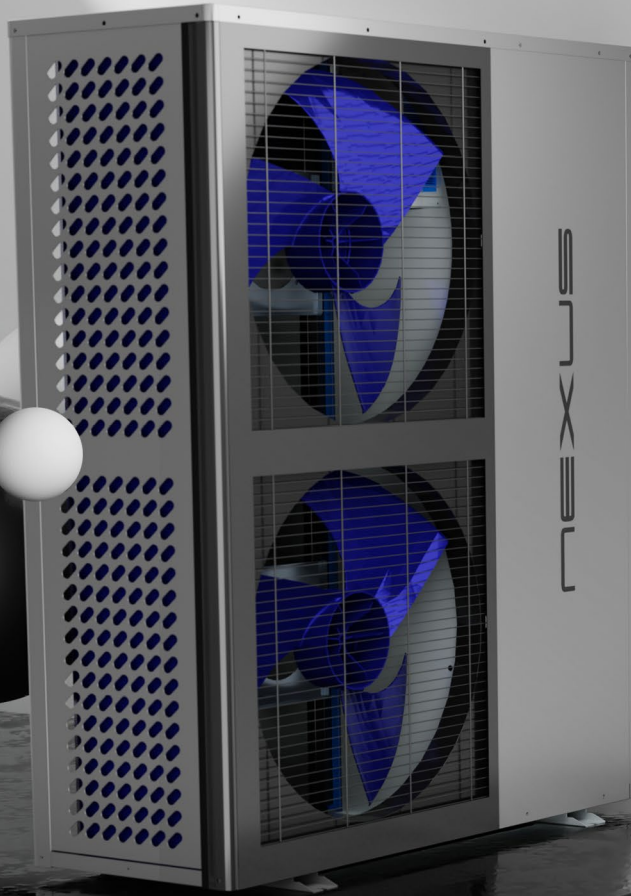
Option to operate the heat pump via the weather control.

The appliance is equipped with automatic defrosting

NEXUS M9 PRO

NEXUS M14 PRO

| | | | |
|---------------------------------------|-------------------|--|---------------------------------------|
| A7/W35 heating power / COP | kW / - | from 4,1 to 10,0 / from 4,47 bis 4,98 | from 5,0 to 13,6 / from 4,69 bis 5,20 |
| Energy efficiency class W35/W55 | | A+++ / A++ | |
| SCOP „A“ W35/W55 | - | 4,79 / 3,61 | 5,02 / 3,73 |
| Compressor | | Mitsubishi Scroll | |
| Circulation pump | | Grundfos UPM3L 25-75 (K) | |
| Control | | Carel (heat pump and heating circuits) | |
| Cooling mode | | Yes | |
| Ambient temp. min/max in cooling mode | °C | 17 / 40 | |
| Ambient temp. min/max in heating mode | °C | -25 / 40 | |
| Recommended heating water flow rate | m ³ /h | 1,65 | 2,35 |
| Operating medium | | R290 | |
| Defrosting type | | hot gas (reverse circulation) | |
| Amount of operating medium | kg | 2,45 | 2,8 |
| Maximum pressure on the water side | bar | 3 | 3 |
| Sound power L _{WA} | dB | 58 | 57,9 |
| Water connection | cal | 1 IG | |
| Pressure drop for recommended flow | kPa | 5,3 | 3,6 |
| Dimensions | | | |
| L x W x H | mm | 1186 x 667 x 762 | 1250 x 667(750)* x 1055 |
| Weight | kg | 160 | 170 |
| Electrical connection | | | |
| Power supply | | 400V 3~ 50Hz | |
| Power cord | mm ² | 5x4,0 | |
| Maximum operating current | A | 4 | 9,2 |



NEXUS / **M**
EVI

HEAT PUMP FOR CENTRAL HEATING + DOMESTIC HOT WATER

INVERTER MONOBLOC HEAT PUMPS ARE EQUIPPED WITH EVI TECHNOLOGY (ENHANCED VAPOR INJECTION). THIS TECHNOLOGY ENABLES EFFICIENT USE EVEN WITH CLASSIC RADIATORS. THANKS TO THE MONOBLOC DESIGN, THE HEAT PUMP IS COMPLETELY DEDICATED TO OUTDOOR INSTALLATION.



ENERGY EFFICIENCY
CLASS A+++



COMPACT DESIGN



EVI TECHNOLOGY



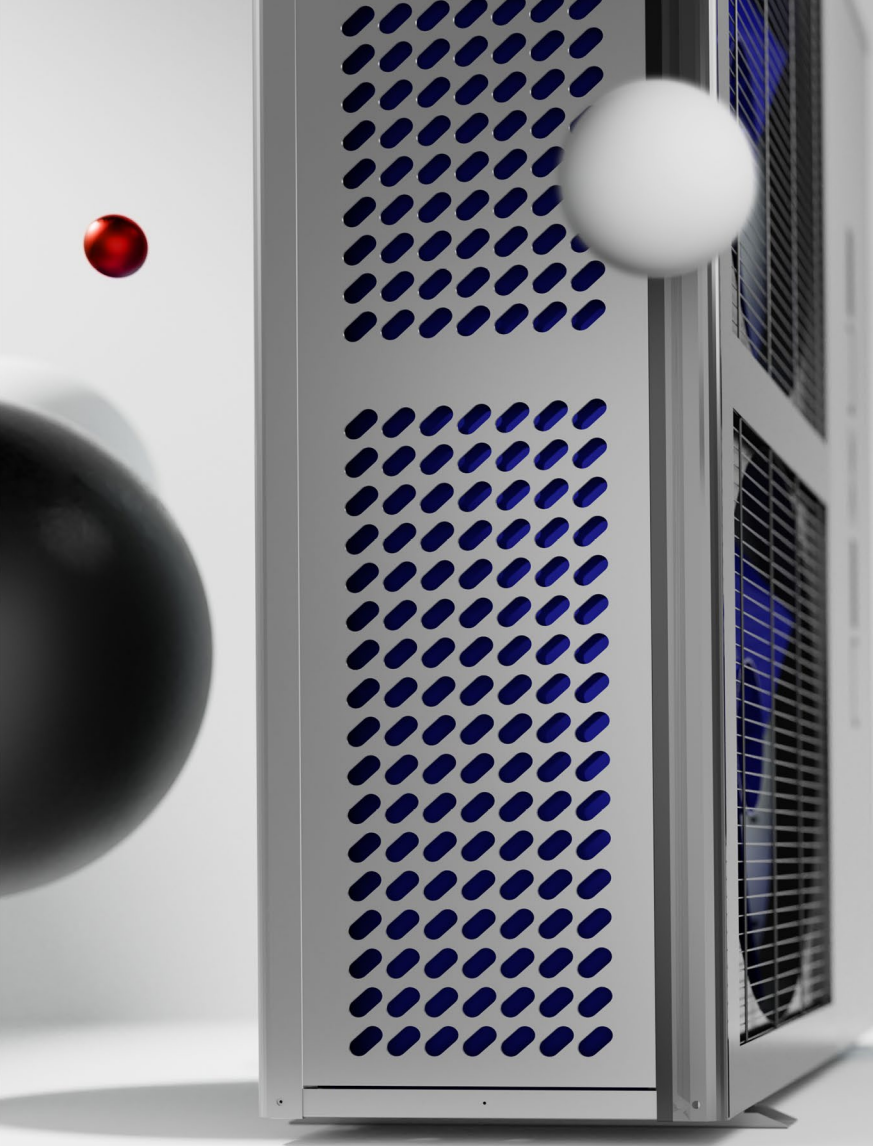
HIGH EFFICIENCY



SILENT OPERATION



INTERNET CONTROL



INSYB/ALFA

**INTELLIGENT
CONTROL**

INSYB/CLOUD

**CLOUD CONTROL
POSSIBLE**

HYDRA/BOX

**COOPERATION WITH
THE HYDRAULIC MODULE**

HYDRA/SOL

**COOPERATION WITH
THE SOLAR MODULE**

One of the most cost-effective solutions for heating a building. The system also works at temperatures of -25°C.

High efficiency and long service life thanks to the use of components from world-renowned manufacturers.

A comprehensive control system ensures optimum control and protection of the system. Control via the Internet is possible. A wired control panel is part of the standard equipment.

High level of operating convenience. Intuitive and simple operation of the controls.

The compact design of the device enables quick installation.

Energy class A+++ at 35°C supply temperature.

NEXUS M8 EVI

NEXUS M13 EVI

NEXUS M18 EVI

NEXUS M35 EVI

| | | NEXUS M8 EVI | NEXUS M13 EVI | NEXUS M18 EVI | NEXUS M35 EVI |
|-------------------------------------|-------------------|---|----------------------|----------------------|----------------------|
| SCOP (W35) moderate climate | kWh/kWh | 4,59 | 4,72 | 4,46 | 4,58 |
| SCOP (W55) moderate climate | kWh/kWh | 3,47 | 3,47 | 3,51 | 3,47 |
| Energy efficiency class (W35) | | A+++ | A+++ | A+++ | A+++ |
| Energy efficiency class (W55) | | A++ | A++ | A++ | A++ |
| Compressor | | Panasonic (rotary, multi-stage steam injection) | | | |
| Expansion valve | | electronic | | | |
| Number of fans | | 1 | 1 | 2 | 2 |
| Pressure drop on the water side | kPa | 31 | 25 | 35 | 45 |
| Controller | | Touch panel | | | |
| Outdoor temperature | °C | from -25 to +45 | | | |
| Recommended heating water flow rate | m ³ /h | 1,4 | 2,2 | 3,1 | 6,0 |
| Refrigerant quantity / GWP | | R32/675 | | | |
| Operating medium quantity | kg | 1,3 | 1,6 | 2,7 | 4 |
| Defrost type | | hot gas (reverse circulation) | | | |
| Sound power level | dB | 62 | 65 | 69 | 66 |
| Dimensions | | | | | |
| L x W x H | mm | 970 x 475 x 835 | 1100 x 475 x 985 | 1050 x 480 x 1330 | 1160 x 500 x 1580 |
| Weight (net/gross) | kg | 110/120 | 140/150 | 170/180 | 230/240 |
| Electrical connection | | | | | |
| Power supply | | 220-240V 50Hz | 380-415V 3~ 50Hz | 380-415V 3~ 50Hz | 380-415V 3~ 50Hz |
| Max. current (heating/cooling/DHW) | A | 8,30/9,67/9,45 | 4,68/5,13/5,26 | 6,37/6,28/7,15 | 14,3/15,6/10,6 |



NEXUS / SPLIT EVI

HEAT PUMP FOR CENTRAL HEATING + DOMESTIC HOT WATER

INVERTER SPLIT HEAT PUMPS. THE COOLING SYSTEM EQUIPPED WITH EVI TECHNOLOGY (INJECTION) ALSO ENSURES HIGH EFFICIENCY IN RADIATOR SYSTEMS. EQUIPPED WITH UNITS FROM RENOWNED GLOBAL MANUFACTURERS.



ENERGY EFFICIENCY
CLASS A+++



SPLIT-DESIGN



EVI TECHNOLOGY



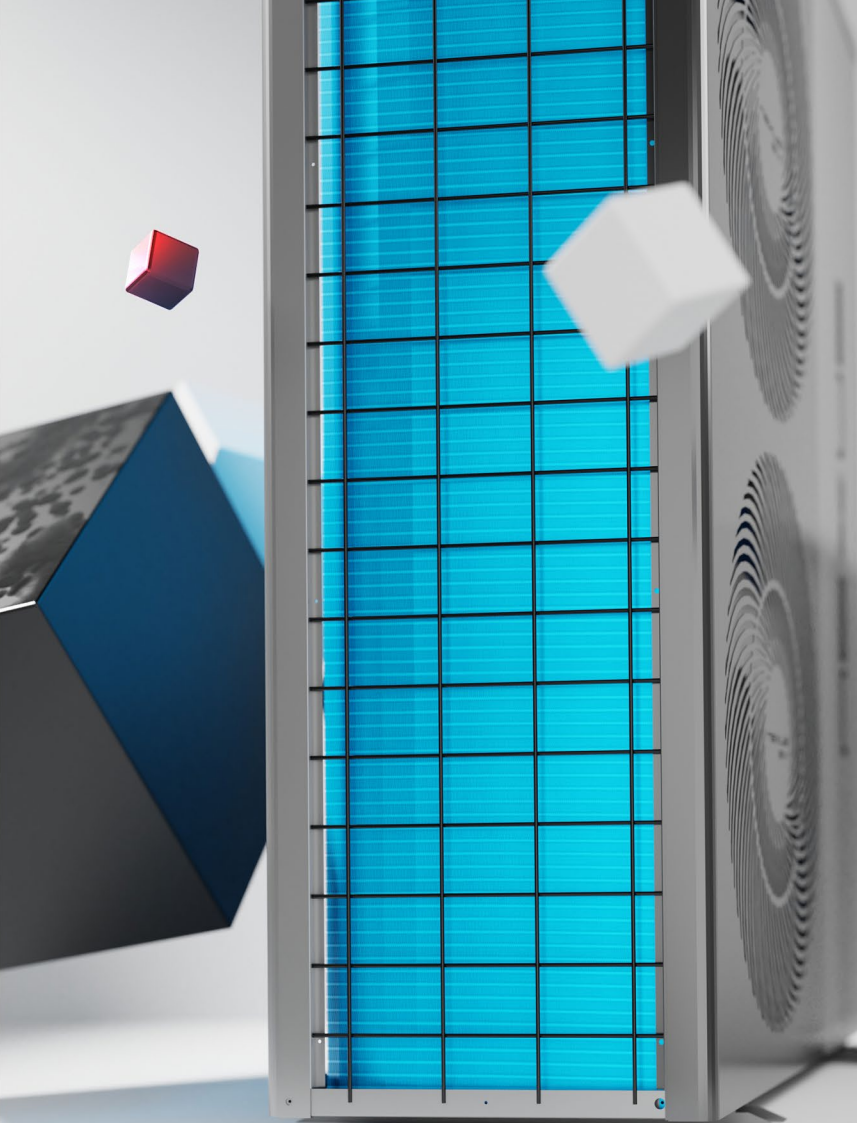
HIGH EFFICIENCY



SILENT OPERATION



INTERNET CONTROL



CLOUD CONTROL POSSIBLE



**COOPERATION WITH
THE SOLAR MODULE**

One of the most cost-effective solutions for heating a building. The system also works at temperatures of -20°C.

High operating efficiency and long service life thanks to the use of components from recognized global manufacturers.

A comprehensive control system ensures optimum control and protection of the system. Control via the Internet is possible.

Easy of use. Intuitive and simple operation of the controls.

The split design eliminates the risk of the pipe's freezing during power failures.

Energy class A+++ at 35°C supply temperature.

Evaporator with hydrophilic coating.

NEXUS S10 EVI

NEXUS S17 EVI

| | | | |
|---|---------|---|---------------------------|
| SCOP (W35) | kWh/kWh | 4,56 | 4,69 |
| SCOP (W55) | kWh/kWh | 3,34 | 3,67 |
| Energy class (W35) | | A+++ | A+++ |
| Energy class (W55) | | A++ | A++ |
| Compressor | | Panasonic (rotary, multi-stage steam injection) | |
| Expansion valve | | electronic CAREL | |
| Suction line filter | | yes | yes |
| Wentylator EC | | yes | yes |
| Central heating circulation pump | | Grundfos | |
| Control | | CAREL | |
| Outdoor temperature | °C | -25 to +45 | |
| Recommended heating water flow rate | m³/h | 1,69 | 2,92 |
| Operating medium | | R410A | |
| Operating medium quantity | kg | 2 | 3,8 |
| Defrosting type | | hot gas | hot gas |
| Sound power level | dB | 63 | 62 |
| Dimensions | | | |
| L x W x H (Outdoor unit) | mm | 1110 x 475 x 810 | 1110 x 475 x 1355 |
| L x W x H (Indoor unit) | mm | 550 x 325 x 650 | 550 x 325 x 650 |
| Weight (Outdoor unit/Indoor unit) | kg | 74/52 | 110/56 |
| Electrical connection | | | |
| Power supply | | 380-420V 3~ 50Hz | |
| Power cable | mm² | 5x2,5 | 5x4 |
| Max operating current (without elec. flow heater) | A | 6,74 | 11,54 |
| Power of the flow heater | kW | 3 | 3 |
| Connections | | | |
| Water connection in the indoor unit | cal | IG 1 | IG 1 |
| Cooling connections | mm | 12,7 (1/2") and 15,88 (5/8") | 12,7 (1/2") and 19 (3/4") |



HYDRA TOWER

COMPLETE BOILER ROOM EQUIPMENT IN A SINGLE DEVICE. THE HYDRA TOWER IS CHARACTERIZED BY ITS COMPACT DESIGN, WHICH ENABLES OPTIMAL USE OF SPACE - WITH A REQUIRED AREA OF JUST OVER 1M². THE SMALL INSTALLATION AREA REQUIRED FOR THE HYDRA TOWER REDUCES THE COST OF CONSTRUCTING A NEW BUILDING AND CREATES ADDITIONAL FREE SPACE IN EXISTING BUILDINGS.

BY HOUSING COMPONENTS SUCH AS THE HOT WATER PUMP, BUFFER CYLINDER, CIRCULATION PUMPS, THREE-WAY VALVE, FILTER AND FITTINGS IN A COMPACT HOUSING, THE HYDRA TOWER ALSO ENSURES AN AESTHETICALLY PLEASING APPEARANCE IN THE BOILER ROOM. THE IMPLEMENTED CONTROL SYSTEM MAKES IT POSSIBLE TO CONTROL THE HEAT PUMP AND OTHER EQUIPMENT IN THE BOILER ROOM.

**The entire
heating room
in one unit**

**Maximum
compatibility
of components**

**Slightly more than
1m² installation area**

Compatibility with heat pumps

NEXUS / **M**
PRO

NEXUS / **M**
EVI

DHW tank

210 l

Buffer tank

65 l

Height

195 cm

Floor space

74 x 74 cm

Weight

235 kg

Operates with circuits

- ✓ **DHW**
- ✓ **Floor heating**
- ✓ **Radiators**

Unit components

- ✓ DHW tank
- ✓ Buffer tank
- ✓ Floor heating pump
- ✓ Radiator pump
- ✓ Circulation pump
- ✓ Electric heater 4kW 400V
- ✓ Three-way valve
- ✓ Mixing valve
- ✓ Magnetic filter



HYDRA[®] / BOX

THE HYDRA-BOX IS AN INTEGRATED, COMPACT HEAT PUMP HYDRAULIC MODULE. IT CONTAINS ALL THE COMPONENTS REQUIRED FOR THE CORRECT AND SAFE OPERATION OF THE HEAT PUMP. THE HYDRA-BOX IS INSTALLED INSIDE THE BUILDING AND SIGNIFICANTLY SPEEDS UP THE INSTALLATION PROCESS.

THE COMPACT DESIGN MEANS THAT THE ENTIRE SYSTEM TAKES UP LESS SPACE, WHILE AT THE SAME TIME ENSURING EASY ACCESS FOR MAINTENANCE. THE AESTHETIC DESIGN OF THE HYDRA-BOX IS ACCOMMODATED ON A SURFACE AREA OF 37.5 X 60 X 82.5 CM AND THE MODULE'S LOW WEIGHT OF 45 KG IS A SIGNIFICANT ADVANTAGE FOR TRANSPORTATION AND INSTALLATION. A COMPREHENSIVE CONTROL SYSTEM REGULATES THE HEAT PUMP AND THE ENTIRE HEATING AND HOT WATER SYSTEM.

**The entire
system in one
aesthetic
unit**

**Maximum
space saving**

**Fast and easy
installation**

Compatibility with heat pumps:

NEXUS / **M**
PRO

NEXUS / **M**
EVI



Components of the set

- | | | |
|---|---|---|
| 1 Vent 1/2" | 8 Thermomanometer | 15 DHW return 1" |
| 2 Magnetic filter | 9 Three-way zone valve with actuator | 16 Drain valve 1/2" |
| 3 Cap valve | 10 Central heating supply 1" | 17 Flow heater 4kW, (optional 6kW) |
| 4 Safety valve 3 bar | 11 Heat pump supply 1" | 18 Control enclosure |
| 5 Ball valve with non-return valve (for filling the system) | 12 Heat pump return 1" | 19 User panel of the controller with graphic touch screen |
| 6 Expansion vessel 12l | 13 DHW supply 1" | |
| 7 Thermometer | 14 Central heating return 1" | |



Cooperation between
PVT solar collectors
and heat pumps

HYDRA[®] SOL

DISCOVER HYDRA SOL - A VERSATILE MODULE THAT GIVES YOU FULL CONTROL OVER YOUR SOLAR ENERGY, DOMESTIC HOT WATER AND HEATING SYSTEM! THIS INNOVATIVE MODULE WORKS TOGETHER WITH A SOLAR THERMAL SYSTEM AS WELL AS WITH A DOMESTIC HOT WATER AND CENTRAL HEATING SYSTEM INCLUDING HEAT PUMP.

WITH HYDRA SOL, YOU CAN MAKE OPTIMUM USE OF THE POTENTIAL OF SOLAR ENERGY TO SUPPLY YOUR HOME WITH HOT WATER AND EFFECTIVELY SUPPORT YOUR CENTRAL HEATING SYSTEM. THIS ALL-IN-ONE MODULE INTEGRATES VARIOUS ENERGY SOURCES AND ENSURES EFFICIENCY AND SAVINGS THROUGH THE USE OF INNOVATIVE TECHNOLOGY.

One control unit **for full control** of your heating system



INSYG / **ALFA**

A COMPREHENSIVE CONTROLLER CONTROLS THE OPERATION OF THE HEAT PUMP AND THE ENTIRE HEATING AND HOT WATER SYSTEM TO ENSURE OPTIMUM CONTROL AND MAXIMUM SAFETY. THE CONTROLLER IS EQUIPPED WITH AN EASY-TO-USE GRAPHIC TOUCHSCREEN DISPLAY.

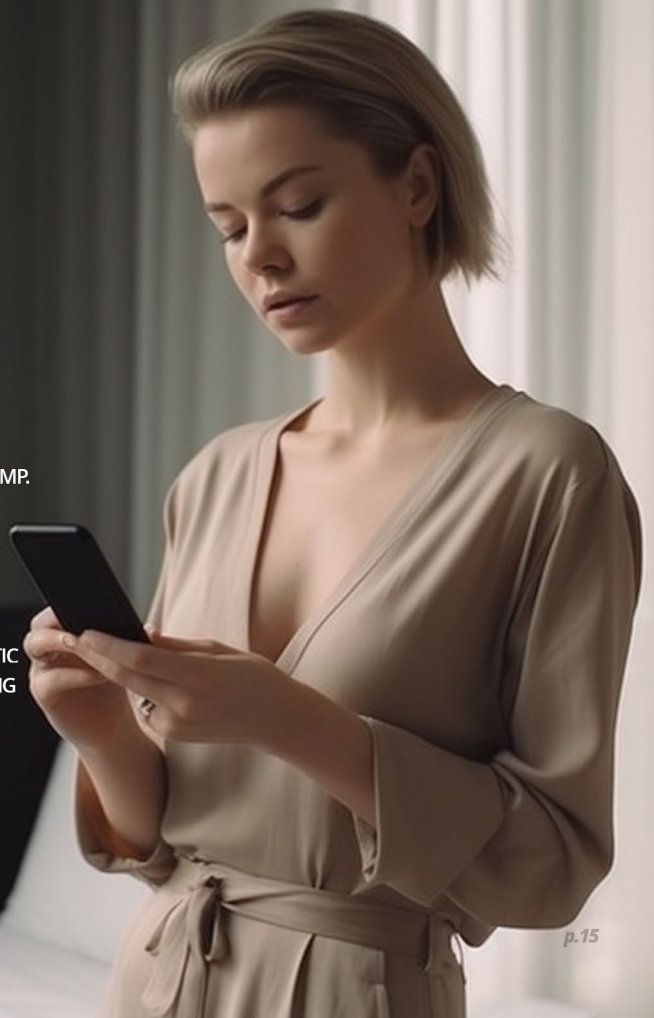
- ✓ *Heating circuit control*
- ✓ *Operation of room thermostats*
- ✓ *Control of the domestic hot water circulation pump*
- ✓ *Intelligent energy management, cooperation with the smart grid.*

Remote control wherever you are

INSYG / **CLOUD**

INSYG CLOUD IS A MODULE THAT ENABLES REMOTE CONTROL OF THE HEAT PUMP. WITH THIS TECHNOLOGY, THE DEVICE CAN BE MONITORED AND CONTROLLED FROM ANYWHERE IN THE WORLD VIA THE INTERNET: THE MODULE OFFERS AN INTUITIVE MOBILE INTERFACE THAT ALLOWS EASY CONFIGURATION AND PERSONALIZATION OF THE HEAT PUMP'S OPERATING SETTINGS.

THE INSYG-CLOUD NOT ONLY OFFERS REMOTE CONTROL, BUT ALSO DIAGNOSTIC FUNCTIONS THAT ENABLE ONGOING ANALYSIS OF THE HEAT PUMP'S OPERATING PARAMETERS.



Designed for heat pumps

SUNEX[®]

FISH S16 THE FISH S16 STORAGE TANKS ARE EQUIPPED WITH TWO HEAT EXCHANGERS. THE LARGE HEATING SURFACES ALLOW THE CONNECTION OF A HEAT PUMP TO THE UPPER HEAT EXCHANGER AND AN ADDITIONAL HEAT SOURCE, E.G. A SOLAR SYSTEM, TO THE LOWER HEAT EXCHANGER. THE FISH S16 TANKS ARE AVAILABLE WITH A CAPACITY OF 300 TO 500 LITERS. THE PUR FOAM INSULATION IS CFC-FREE AND THEREFORE ENVIRONMENTALLY FRIENDLY.

FISH S15 THE FISH 15 BUFFER TANK HAS A HEAT EXCHANGER WITH A PARTICULARLY LARGE SURFACE, WHICH ALLOWS THE HEAT PUMP TO HEAT THE DOMESTIC WATER EFFICIENTLY. THE FISH S15 TANKS ARE AVAILABLE WITH A CAPACITY OF 200 TO 500 LITERS. THE PUR FOAM INSULATION IS CFC-FREE AND THEREFORE ENVIRONMENTALLY FRIENDLY



FISH S16

FISH S15



Large variety of FISH tanks

Domestic hot water tank

- S1** with one heat exchanger
- S2** with two heat exchangers
- S8** without heat exchanger

Buffer tank

- S5** with one heat exchanger
- S11** with two heat exchangers
- S4** without heat exchanger

Hygienic tank

- S9** with one heat exchanger



Enlarged heat exchanger



Optionales UV-20-Desinfektionssystem



Approved by the Hygiene Institute



Reliable corrosion protection

Pump groups

for heating systems

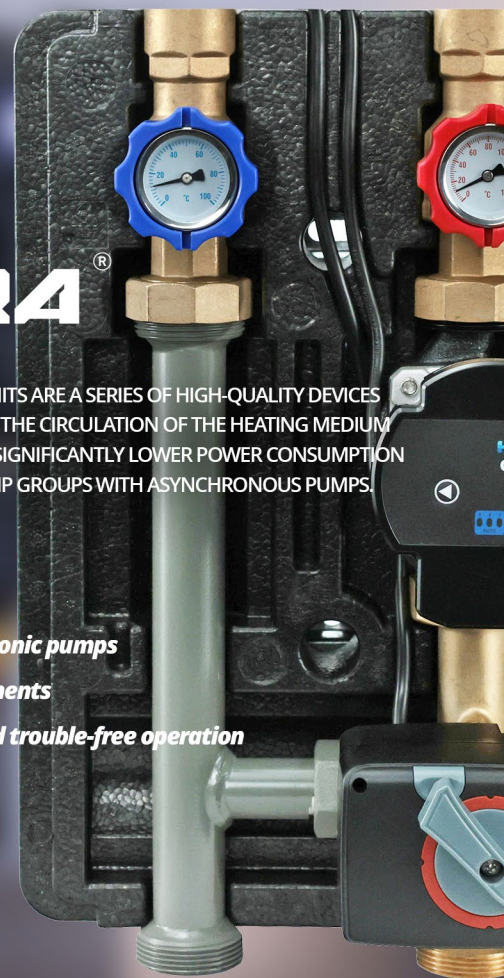


OEM
OEM PRODUCTION
POSSIBLE

HYDRA[®]

THE HYDRA SERIES PUMP UNITS ARE A SERIES OF HIGH-QUALITY DEVICES THAT ARE RESPONSIBLE FOR THE CIRCULATION OF THE HEATING MEDIUM IN THE SYSTEM. IT ENSURES SIGNIFICANTLY LOWER POWER CONSUMPTION COMPARED TO TYPICAL PUMP GROUPS WITH ASYNCHRONOUS PUMPS.

- ✓ Energy-saving electronic pumps
- ✓ High-quality components
- ✓ Guarantees long and trouble-free operation



HYDRA GPO



HYDRA GPO M



HYDRA GPO S



Heating distributor

DN20 | DN25

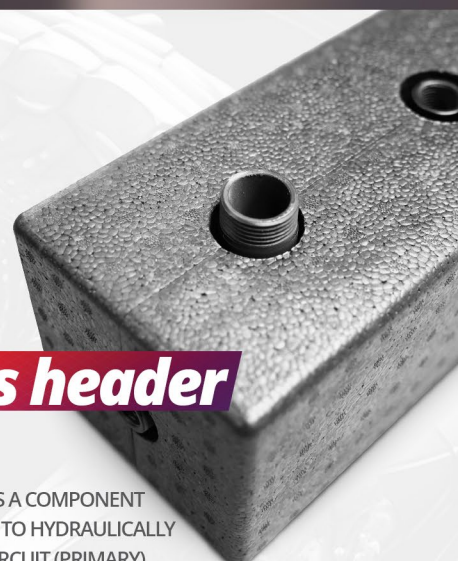
for two or three heating circuits sets



Low loss header

DN20 | DN25

A HYDRAULIC SEPARATOR IS A COMPONENT USED IN HEATING SYSTEMS TO HYDRAULICALLY DECOUPLE THE HEATING CIRCUIT (PRIMARY) AND THE CONSUMER CIRCUIT FROM EACH OTHER.



NEXUS / M

STANDARD VERSION



| | | | M9 Pro (420000065) | NEXUS M14 Pro (420000064) |
|------------------------|-----------|---|--------------------|--|
| | 1 | Nexus heat pump | 1 pcs. | |
| | 2 | FISH S15 hot water storage tank + sleeve for temperature sensor | 1 pcs. | 200 l (693210200) + (707180004) 300 l (693120300) + (707180004) |
| | 3 | FISH S4 buffer tank (wall-mounted or free-standing version) + sleeve for temperature sensor | 1 pcs. | 100 l (693000101, 693000102) + (707180004) |
| | 4 | Three-way switching valve | 1 pcs. | (707060403) |
| | 5 | INSYG ALFA control unit | 1 pcs. | Ver. 9 kW (490380002) Ver. 14 kW (490380003) |
| | 6 | Hydraulic module for heat pump heating element | 1 pcs. | Ver. 4,5 kW (690001001) Ver. 6 kW (690001002) |
| | 7 | INSYG CLOUD web control | 1 pcs. | (709000925) |
| | 8 | Adjustable stand for heat pump | 1 pcs. | (490000511) |
| | 9 | Drip tray + heating cable | 1 pcs. | (490000513) + (490000590) |
| For 2 heating circuits | 10 | HYDRA GPO S pump group | 1 pcs. | DN25 (400011733) |
| | 11 | HYDRA GPO pump group | 1 pcs. | DN25 (400011731) |
| | 12 | 2GPO 125mm distributor | 1 pcs. | DN25 (690006203) |
| | 13 | Wireless room controller with two operating levels | 2 pcs. | (522300017) |
| For 1 heating circuit | 10 | HYDRA GPO S pump group or GPO pump group | 1 pcs. | DN25 (400011733 / 400011731) |
| | 13 | Wireless room controller with two operating levels | 1 pcs. | (522300017) |

NEXUS / M PRO

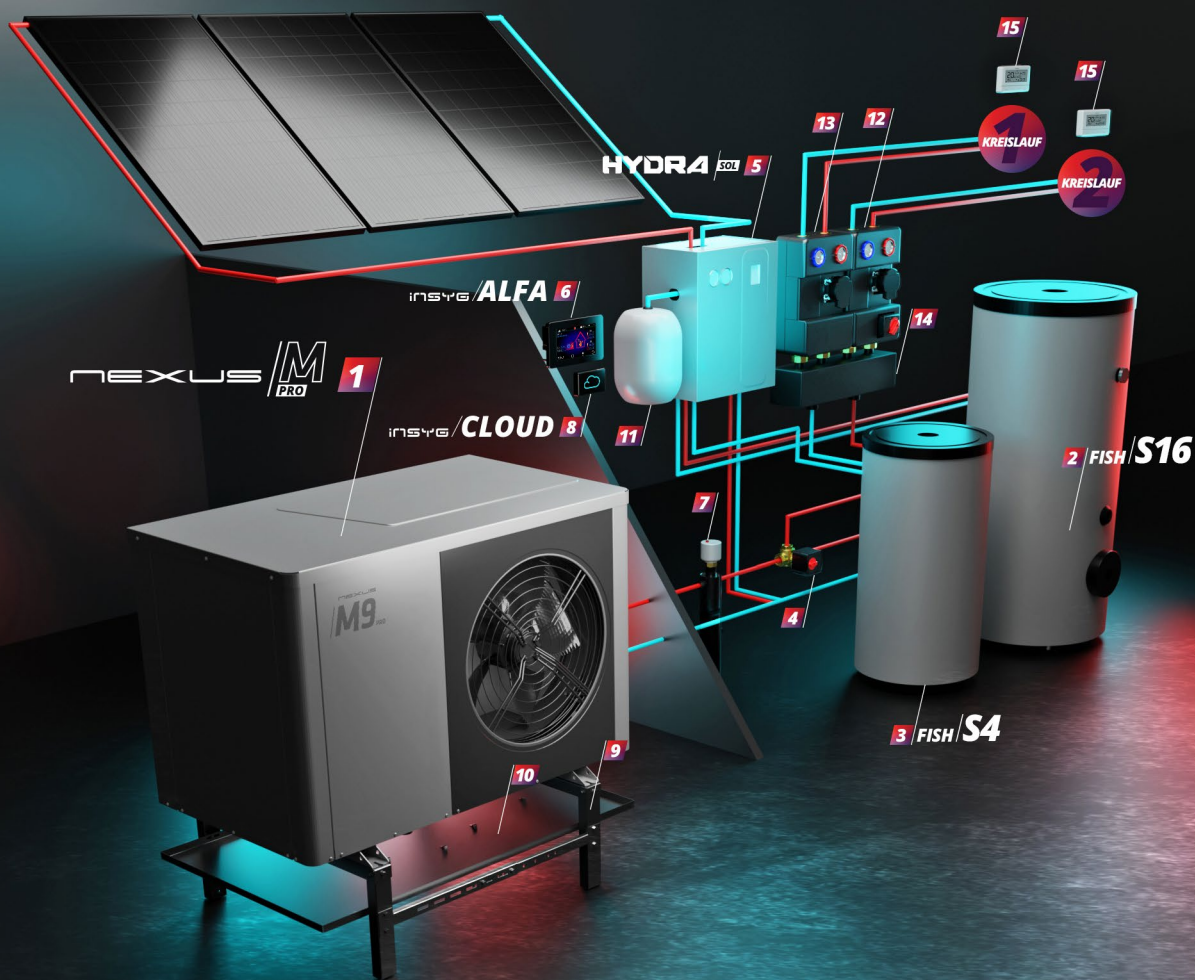
WITH HYDRA BOX



| | | | | |
|------------------------|--|--------|--|---------------------------------|
| | 1 Nexus heat pump | 1 pcs. | M9 Pro (420000065) | NEXUS M14 Pro (420000064) |
| | 2 FISH S15 hot water storage tank + sleeve for temperature sensor | 1 pcs. | 200 l (693210200) + (707180004) | 300 l (693120300) + (707180004) |
| | 3 FISH S4 buffer tank (wall-mounted or free-standing version) + sleeve for temperature sensor | 1 pcs. | 100 l (693000101, 693000102) + (707180004) | |
| | 4 HYDRA BOX PRO module | 1 pcs. | Ver. 4 kW (440000002) | Ver. 6 kW (440000003) |
| | 5 INSYG CLOUD web control | 1 pcs. | (709000925) | |
| | 6 Adjustable stand for heat pump | 1 pcs. | (490000511) | |
| | 7 Drip tray + heating cable | 1 pcs. | (490000513) + (490000590) | |
| For 2 heating circuits | 8 HYDRA GPO S pump group | 1 pcs. | DN25 (400011733) | |
| | 9 HYDRA GPO pump group | 1 pcs. | DN25 (400011731) | |
| | 10 2GPO 125mm distributor | 1 pcs. | DN25 (690006203) | |
| | 11 Wireless room controller with two operating levels | 2 pcs. | (522300017) | |
| For 1 heating circuit | 8 HYDRA GPO S pump group or GPO pump group | 1 pcs. | DN25 (400011733 / 400011731) | |
| | 11 Wireless room controller with two operating levels | 1 pcs. | (522300017) | |

NEXUS / M PRO

WITH HYDRA SOL



| | | | M9 Pro (420000065) | NEXUS M14 Pro (420000064) |
|------------------------|---|--|--|------------------------------|
| 1 | Nexus heat pump | 1 Pcs. | | |
| 2 | FISH S16 hot water storage tank + sleeve for temperature sensor | 1 pcs. | 300 l (693220300) + (707180004) | |
| 3 | FISH S4 buffer tank (wall-mounted or free-standing version) + sleeve for temperature sensor | 1 pcs. | 100 l (693000101, 693000102) + (707180004) | |
| 4 | Three-way switching valve | 1 pcs. | (707060403) | |
| 5 | HYDRA SOL module | 1 pcs. | (441000011) | |
| 6 | INSYG ALFA control unit | 1 pcs. | Ver. 9 kW (490380002) | Ver. 14 kW (490380003) |
| 7 | Hydraulic module for heat pump heating element | 1 pcs. | Ver. 4,5 kW (690001001) | Ver. 6 kW (690001002) |
| 8 | INSYG CLOUD web control | 1 pcs. | (709000925) | |
| 9 | Adjustable stand for heat pump | 1 pcs. | (490000511) | |
| 10 | Drip tray + heating cable | 1 pcs. | (490000513) + (490000590) | |
| 11 | Expansion vessel 80L 10 bar | 1 pcs. | (521000081) | |
| | Solar liquid 10l (concentrate) | 10 pcs. | (599010001) | |
| | Quick-release coupling for expansion vessel 3/4 x 3/4" | 1 pcs. | (707060111) | |
| For 2 heating circuits | 12 | HYDRA GPO S pump group | 1 pcs. | DN25 (400011733) |
| | 13 | HYDRA GPO pump group | 1 pcs. | DN25 (400011731) |
| | 14 | 2GPO 125mm distributor | 1 pcs. | DN25 (690006203) |
| | 15 | Wireless room controller with two operating levels | 2 pcs. | (522300017) |
| For 1 heating circuit | 12 | HYDRA GPO S pump group or GPO pump group | 1 pcs. | DN25 (400011733 / 400011731) |
| | 15 | Wireless room controller with two operating levels | 1 pcs. | (522300017) |

NEXUS / M PRO

WITH HYDRA BOX UND HYDRA SOL



| | | M9 Pro (420000065) | NEXUS M14 Pro (420000064) | |
|------------------------|---|--|--|------------------------------|
| 1 | Nexus heat pump | 1 pcs. | | |
| 2 | FISH S16 hot water storage tank + sleeve for temperature sensor | 1 pcs. | 300 l (693220300) + (707180004) | |
| 3 | FISH S4 buffer tank (wall-mounted or free-standing version) + sleeve for temperature sensor | 1 pcs. | 100 l (693000101, 693000102) + (707180004) | |
| 4 | HYDRA BOX PRO module | 1 pcs. | Ver. 4 kW (440000002) | |
| 5 | HYDRA SOL module | 1 pcs. | Ver. 6 kW (440000003) | |
| 6 | INSYG CLOUD web control | 1 pcs. | (441000011) | |
| 7 | Adjustable stand for heat pump | 1 pcs. | (709000925) | |
| 8 | Drip tray + heating cable | 1 pcs. | (490000511) | |
| 9 | Expansion vessel 80L 10 bar | 1 pcs. | (490000513) + (490000590) | |
| | Solar liquid 10l (concentrate) | 10 pcs. | (521000081) | |
| | Quick-release coupling for expansion vessel 3/4 x 3/4" | 1 pcs. | (599010001) | |
| | | | (707060111) | |
| For 2 heating circuits | 10 | HYDRA GPO S pump group | 1 pcs. | DN25 (400011733) |
| | 11 | HYDRA GPO pump group | 1 pcs. | DN25 (400011731) |
| | 12 | 2GPO 125mm distributor | 1 pcs. | DN25 (690006203) |
| | 13 | Wireless room controller with two operating levels | 2 pcs. | (522300017) |
| For 1 heating circuits | 10 | HYDRA GPO S pump group or GPO pump group | 1 pcs. | DN25 (400011733 / 400011731) |
| | 13 | Wireless room controller with two operating levels | 1 pcs. | (522300017) |

NEXUS ^M _{EVI}

STANDARD VERSION



| | | | | | |
|------------------------|---|--|--|---------------------------------|---------------------|
| 1 | Nexus heat pump | 1 pcs. | M8 EVI (420000508) | M13 EVI (420000513) | M18 EVI (420000518) |
| 2 | FISH S15 hot water storage tank + sleeve for temperature sensor | 1 pcs. | 200 l (693210200) + (707180004) | 300 l (693120300) + (707180004) | |
| 3 | FISH S4 buffer tank (wall-mounted or free-standing version) + sleeve for temperature sensor | 1 pcs. | 100 l (693000101, 693000102) + (707180004) | | |
| 4 | Three-way switching valve | 1 pcs. | (707060403) | | |
| 5 | INSYG ALFA control unit | 1 pcs. | (490380004) | | |
| 6 | Hydraulic module for heat pump heating element | 1 pcs. | Ver. 4,5 kW (690001001) | Ver. 6 kW (690001002) | |
| 7 | Electric heater | 1 pcs. | 2 kW 230V (524101012) | 3 kW 230V (524101013) | |
| 8 | INSYG CLOUD web control | 1 pcs. | (709000925) | | |
| 9 | Adjustable stand for heat pump | 1 pcs. | (490000501) | | |
| 10 | Drip tray + heating cable | 1 pcs. | (490000507) | | |
| 11 | Circulation pump | 1 pcs. | (718003112) | | (718003109) |
| For 2 heating circuits | 12 | HYDRA GPO S pump group | 1 pcs. | DN25 (400011733) | |
| | 13 | HYDRA GPO pump group | 1 pcs. | DN25 (400011731) | |
| | 14 | 2GPO 125mm distributor | 1 pcs. | DN25 (690006203) | |
| | 15 | Wireless room controller with two operating levels | 2 pcs. | (522300017) | |
| For 1 heating circuit | 12 | HYDRA GPO S pump group or GPO pump group | 1 pcs. | DN25 (400011733 / 400011731) | |
| | 15 | Wireless room controller with two operating levels | 1 pcs. | (522300017) | |

NEXUS / M EVI

WITH HYDRA BOX



| | | | M8 EVI (420000508) | M13 EVI (420000513) |
|------------------------|-----------|---|--------------------|--|
| | 1 | Nexus heat pump | 1 pcs. | |
| | 2 | FISH S15 hot water storage tank + sleeve for temperature sensor | 1 pcs. | 200 l (693210200) + (707180004) 300 l (693120300) + (707180004) |
| | 3 | FISH S4 buffer tank (wall-mounted or free-standing version) + sleeve for temperature sensor | 1 pcs. | 100 l (693000101, 693000102) + (707180004) |
| | 4 | HYDRA BOX M EVI Modul | 1 pcs. | Ver. 4 kW (440000011) Ver. 6 kW (440000012) |
| | 5 | Electric heater | 1 pcs. | 2 kW 230V (524101012) 3 kW 230V (524101013) |
| | 6 | INSYGO CLOUD web control | 1 pcs. | (709000925) |
| | 7 | Adjustable stand for heat pump | 1 pcs. | (490000501) |
| | 8 | Drip tray + heating cable | 1 pcs. | (490000507) |
| For 2 heating circuits | 9 | HYDRA GPO S pump group | 1 pcs. | DN25 (400011733) |
| | 10 | HYDRA GPO pump group | 1 pcs. | DN25 (400011731) |
| | 11 | 2GPO 125mm distributor | 1 pcs. | DN25 (690006203) |
| | 12 | Wireless room controller with two operating levels | 2 pcs. | (522300017) |
| For 1 heating circuit | 9 | HYDRA GPO S pump group or GPO pump group | 1 pcs. | DN25 (400011733 / 400011731) |
| | 12 | Wireless room controller with two operating levels | 1 pcs. | (522300017) |

NEXUS ^M EVI

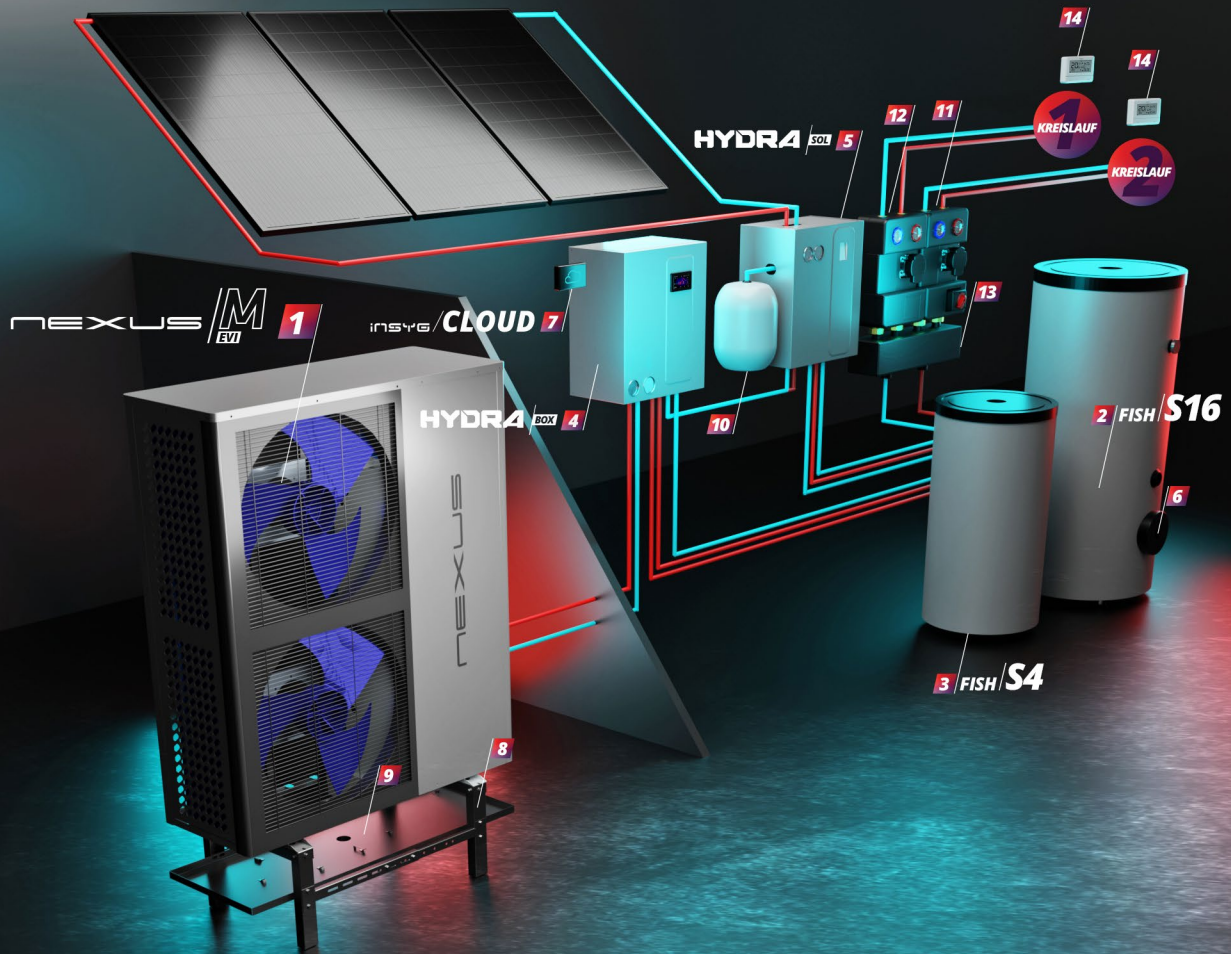
WITH HYDRA SOL



| | | | | | |
|------------------------|---|--|--|------------------------------|---------------------|
| 1 | Nexus heat pump | 1 pcs. | M8 EVI (420000508) | M13 EVI (420000513) | M18 EVI (420000518) |
| 2 | FISH S16 hot water storage tank + sleeve for temperature sensor | 1 pcs. | 300 l (693220300) + (707180004) | | |
| 3 | FISH S4 buffer tank (wall-mounted or free-standing version) + sleeve for temperature sensor | 1 pcs. | 100 l (693000101, 693000102) + (707180004) | | |
| 4 | Three-way switching valve | 1 pcs. | (707060403) | | |
| 5 | HYDRA SOL module | 1 pcs. | (441000011) | | |
| 6 | INSYG ALFA control unit | 1 pcs. | (490380004) | | |
| 7 | Hydraulic module for heat pump heating element | 1 pcs. | Ver. 4,5 kW (690001001) | Ver. 6 kW (690001002) | |
| 8 | Electric heater | 1 pcs. | 3 kW 230V (524101013) | | |
| 9 | INSYG CLOUD web control | 1 pcs. | (709000925) | | |
| 10 | Adjustable stand for heat pump | 1 pcs. | (490000501) | | |
| 11 | Drip tray + heating cable | 1 pcs. | (490000507) | | |
| 12 | Circulation pump | 1 pcs. | (718003112) | (718003109) | |
| 13 | Expansion vessel 80L 10 bar | 1 pcs. | (521000081) | | |
| | Solar liquid 10l (concentrate) | 10 pcs. | (599010001) | | |
| | Quick-release coupling for expansion vessel 3/4 x 3/4" | 1 pcs. | (707060111) | | |
| For 2 heating circuits | 14 | HYDRA GPO S pump group | 1 pcs. | DN25 (400011733) | |
| | 15 | HYDRA GPO pump group | 1 pcs. | DN25 (400011731) | |
| | 16 | 2GPO 125mm distributor | 1 pcs. | DN25 (690006203) | |
| | 17 | Wireless room controller with two operating levels | 2 pcs. | (522300017) | |
| For 1 heating circuit | 14 | HYDRA GPO S pump group or GPO pump group | 1 pcs. | DN25 (400011733 / 400011731) | |
| | 17 | Wireless room controller with two operating levels | 1 pcs. | (522300017) | |

NEXUS / M

WITH HYDRA BOX AND HYDRA SOL



| | | M8 EVI (420000508) | M13 EVI (420000513) |
|------------------------|---|--|--|
| 1 | Nexus heat pump | 1 pcs. | |
| 2 | FISH S16 hot water storage tank + sleeve for temperature sensor | 1 pcs. | 300 l (693220300) + (707180004) |
| 3 | FISH S4 buffer tank (wall-mounted or free-standing version) + sleeve for temperature sensor | 1 pcs. | 100 l (693000101, 693000102) + (707180004) |
| 4 | HYDRA BOX M EVI module | 1 pcs. | Ver. 4 kW (440000011) |
| 5 | HYDRA SOL module | 1 pcs. | Ver. 6 kW (440000012) |
| 6 | Electric heater | 1 pcs. | (441000011) |
| 7 | INSYG CLOUD web control | 1 pcs. | 3 kW 230V (524101013) |
| 8 | Adjustable stand for heat pump | 1 pcs. | (709000925) |
| 9 | Drip tray + heating cable | 1 pcs. | (490000501) |
| 10 | Expansion vessel 80L 10 bar | 1 pcs. | (490000507) |
| | Solar liquid 10l (concentrate) | 10 pcs. | (521000081) |
| | Quick-release coupling for expansion vessel 3/4 x 3/4" | 1 pcs. | (599010001) |
| | | | (707060111) |
| For 2 heating circuits | 11 | HYDRA GPO S pump group | 1 pcs. DN25 (400011733) |
| | 12 | HYDRA GPO pump group | 1 pcs. DN25 (400011731) |
| | 13 | 2GPO 125mm distributor | 1 pcs. DN25 (690006203) |
| | 14 | Wireless room controller with two operating levels | 2 pcs. (522300017) |
| For 1 heating circuit | 11 | HYDRA GPO S pump group or GPO pump group | 1 pcs. DN25 (400011733 / 400011731) |
| | 14 | Wireless room controller with two operating levels | 1 pcs. (522300017) |

NEXUS / SPLIT EVI

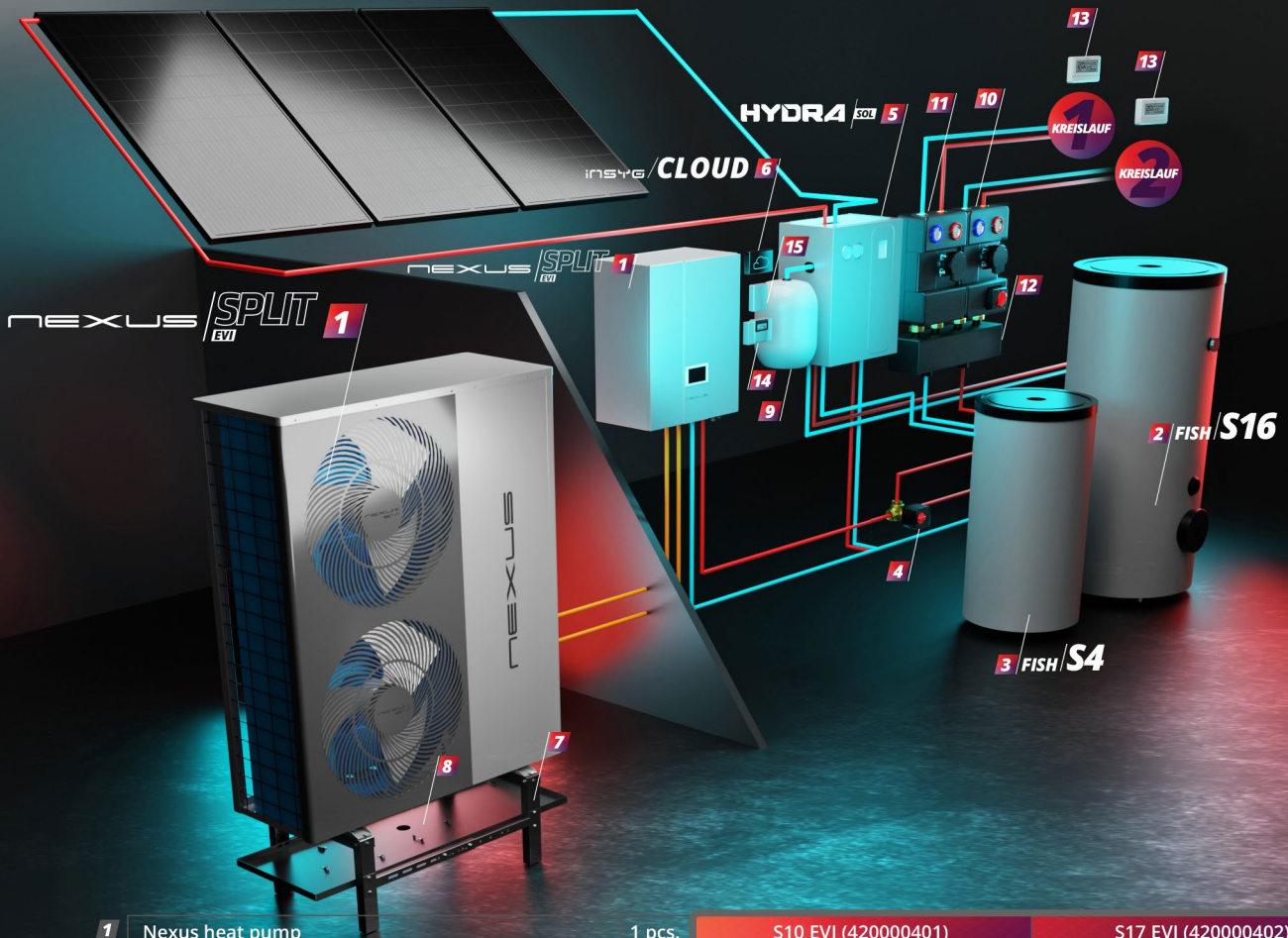
STANDARD VERSION



| | | | S10 EVI (420000401) | S17 EVI (420000402) |
|------------------------|--|--------|--|---------------------------------|
| | 1 Nexus heat pump | 1 pcs. | | |
| | 2 FISH S15 hot water storage tank + sleeve for temperature sensor | 1 pcs. | 200 l (693210200) + (707180004) | 300 l (693120300) + (707180004) |
| | 3 FISH S4 buffer tank (wall-mounted or free-standing version) + sleeve for temperature sensor | 1 pcs. | 100 l (693000101, 693000102) + (707180004) | |
| | 4 Three-way switching valve | 1 pcs. | (707060403) | |
| | 5 INSYG CLOUD web control | 1 pcs. | (709000925) | |
| | 6 Adjustable stand for heat pump | 1 pcs. | (490000501) | |
| | 7 Drip tray + heating cable | 1 pcs. | (490000507) | |
| For 2 heating circuits | 8 HYDRA GPO S pump group | 1 pcs. | DN25 (400011733) | |
| | 9 HYDRA GPO pump group | 1 pcs. | DN25 (400011731) | |
| | 10 2GPO 125mm distributor | 1 pcs. | DN25 (690006203) | |
| | 11 Wireless room controller with two operating levels | 2 pcs. | (522300017) | |
| | 12 I2 - Heating circuit controller | 1 pcs. | (722200087) | |
| | 13 Internet module RS WIFI | 1 pcs. | (522300019) | |
| For 1 heating circuit | 8 HYDRA GPO S pump group or GPO pump group | 1 pcs. | DN25 (400011733 / 400011731) | |
| | 11 Wireless room controller with two operating levels | 1 pcs. | (522300017) | |
| | 12 I1 - Heating circuit controller | 1 pcs. | (707060373) | |
| | 13 Internet module RS WIFI | 1 pcs. | (522300019) | |

NEXUS / SPLIT EVI

WITH HYDRA SOL



| | | |
|---|---|---------|
| 1 | Nexus heat pump | 1 pcs. |
| 2 | FISH S16 hot water storage tank + sleeve for temperature sensor | 1 pcs. |
| 3 | FISH S4 buffer tank (wall-mounted or free-standing version) + sleeve for temperature sensor | 1 pcs. |
| 4 | Three-way switching valve | 1 pcs. |
| 5 | HYDRA SOL module | 1 pcs. |
| 6 | INSYG CLOUD web control | 1 pcs. |
| 7 | Adjustable stand for heat pump | 1 pcs. |
| 8 | Drip tray + heating cable | 1 pcs. |
| 9 | Expansion vessel 80L 10 bar | 1 pcs. |
| | Solar liquid 10l (concentrate) | 10 pcs. |
| | Quick-release coupling for expansion vessel 3/4 x 3/4" | 1 pcs. |

For 2 heating circuits

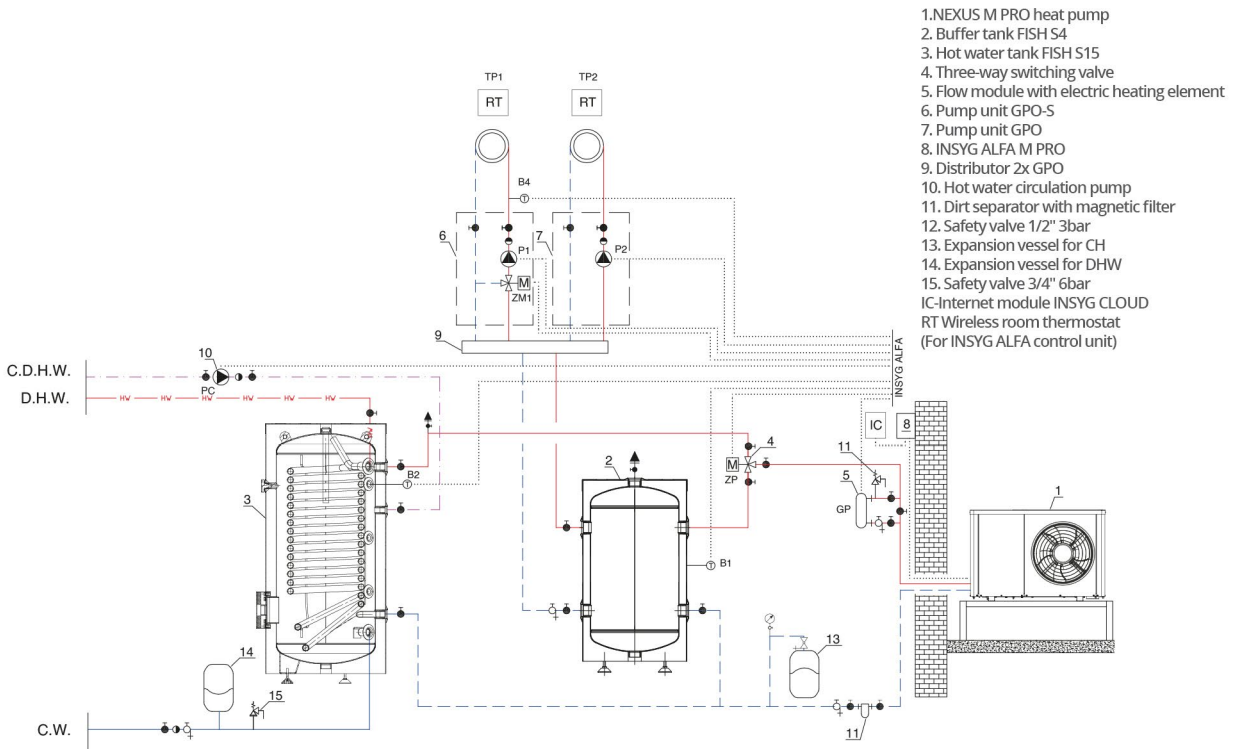
| | | |
|----|--|--------|
| 10 | HYDRA GPO S pump group | 1 pcs. |
| 11 | HYDRA GPO pump group | 1 pcs. |
| 12 | 2GPO 125mm distributor | 1 pcs. |
| 13 | Wireless room controller with two operating levels | 2 pcs. |
| 14 | I2 - Heating circuit controller | 1 pcs. |
| 15 | Internet module RS WIFI | 1 pcs. |

For 1 heating circuit

| | | |
|----|--|--------|
| 10 | HYDRA GPO S pump group or GPO pump group | 1 pcs. |
| 13 | Wireless room controller with two operating levels | 1 pcs. |
| 14 | I1 - Heating circuit controller | 1 pcs. |
| 15 | Internet module RS WIFI | 1 pcs. |

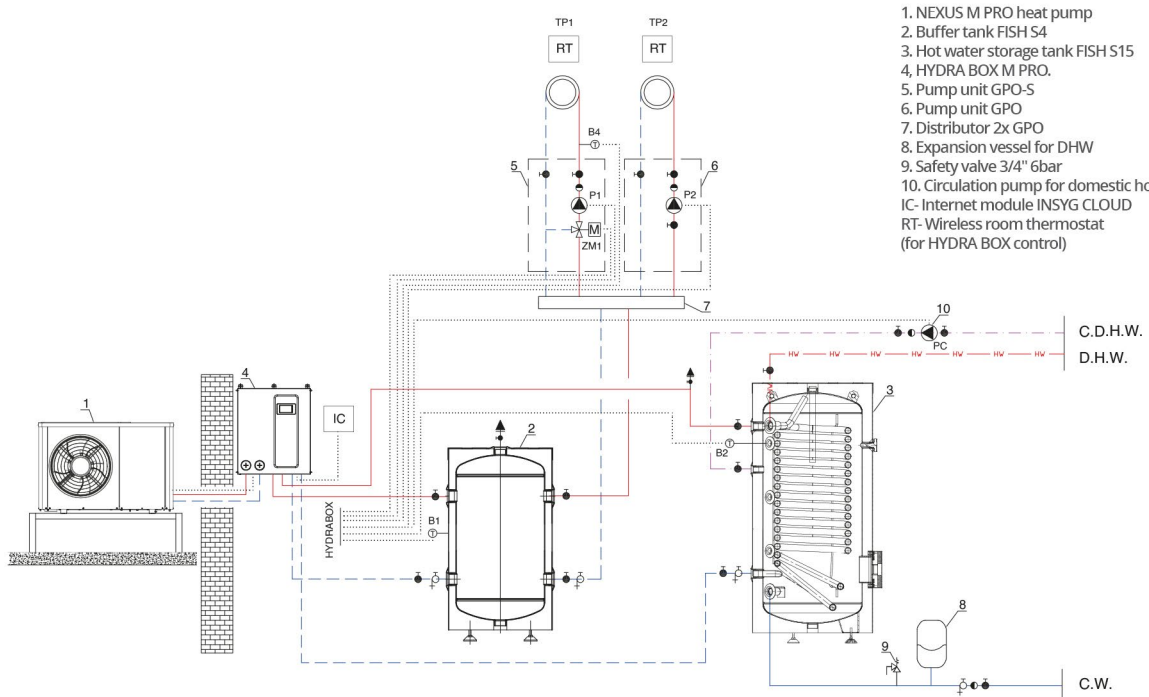
| | S10 EVI (420000401) | S17 EVI (420000402) |
|--|---------------------|--|
| | | 300 l (693220300) |
| | | 100 l (693000101, 693000102) + (707180004) |
| | | (707060403) |
| | | (441000011) |
| | | (709000925) |
| | | (490000501) |
| | | (490000507) |
| | | (521000081) |
| | | (599010001) |
| | | (707060111) |
| | | DN25 (400011733) |
| | | DN25 (400011731) |
| | | DN25 (690006203) |
| | | (522300017) |
| | | (722200087) |
| | | (522300019) |
| | | DN25 (400011733 / 400011731) |
| | | (522300017) |
| | | (707060373) |
| | | (522300019) |

BASIS - SCHEME



1. NEXUS M PRO heat pump
2. Buffer tank FISH S4
3. Hot water tank FISH S15
4. Three-way switching valve
5. Flow module with electric heating element
6. Pump unit GPO-S
7. Pump unit GPO
8. INSYG ALFA M PRO
9. Distributor 2x GPO
10. Hot water circulation pump
11. Dirt separator with magnetic filter
12. Safety valve 1/2" 3bar
13. Expansion vessel for CH
14. Expansion vessel for DHW
15. Safety valve 3/4" 6bar
- IC-Internet module INSYG CLOUD
- RT-Wireless room thermostat (For INSYG ALFA control unit)

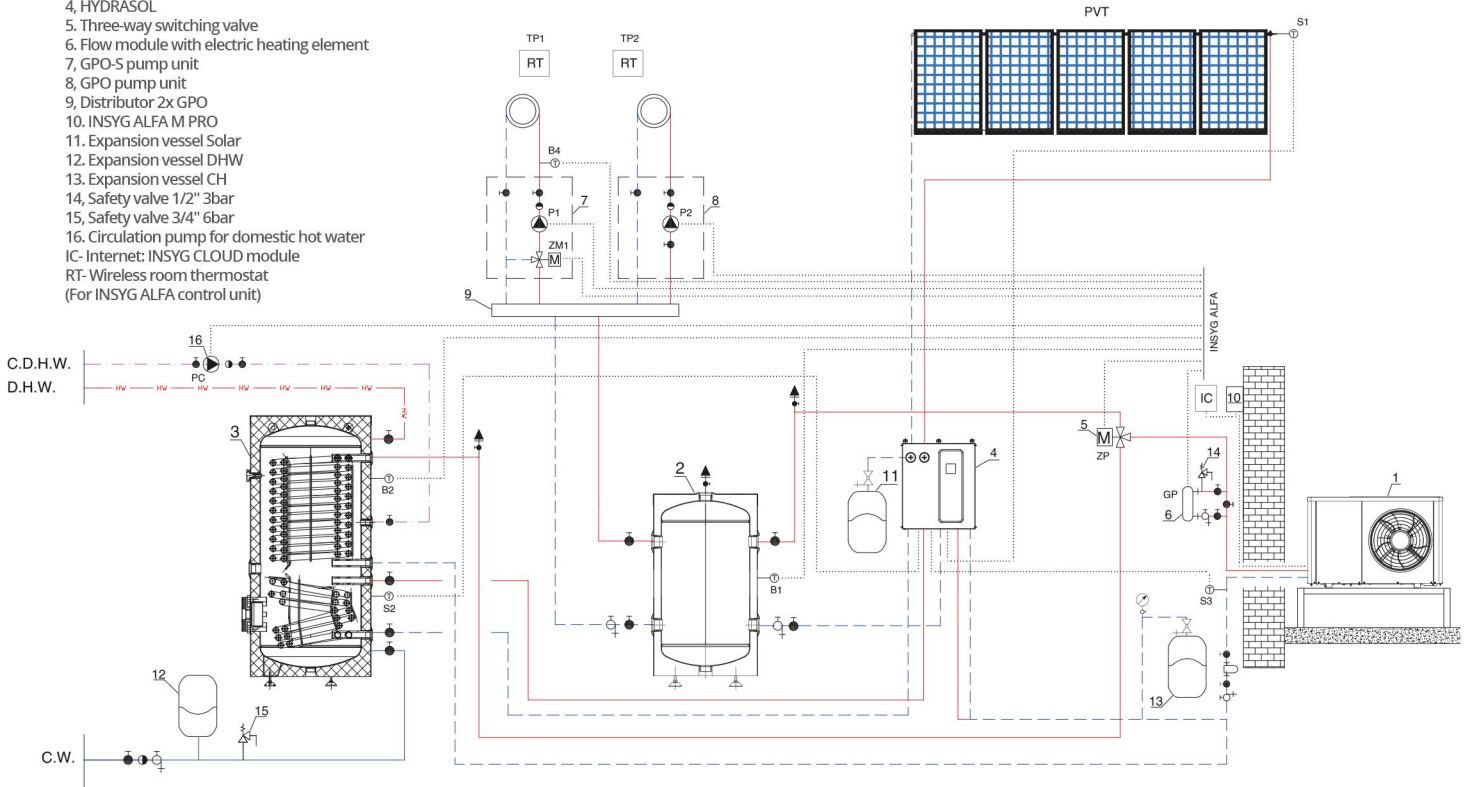
HYDRA BOX - Scheme



1. NEXUS M PRO heat pump
2. Buffer tank FISH S4
3. Hot water storage tank FISH S15
4. HYDRA BOX M PRO.
5. Pump unit GPO-S
6. Pump unit GPO
7. Distributor 2x GPO
8. Expansion vessel for DHW
9. Safety valve 3/4" 6bar
10. Circulation pump for domestic hot water
- IC- Internet module INSYG CLOUD
- RT- Wireless room thermostat (for HYDRA BOX control)

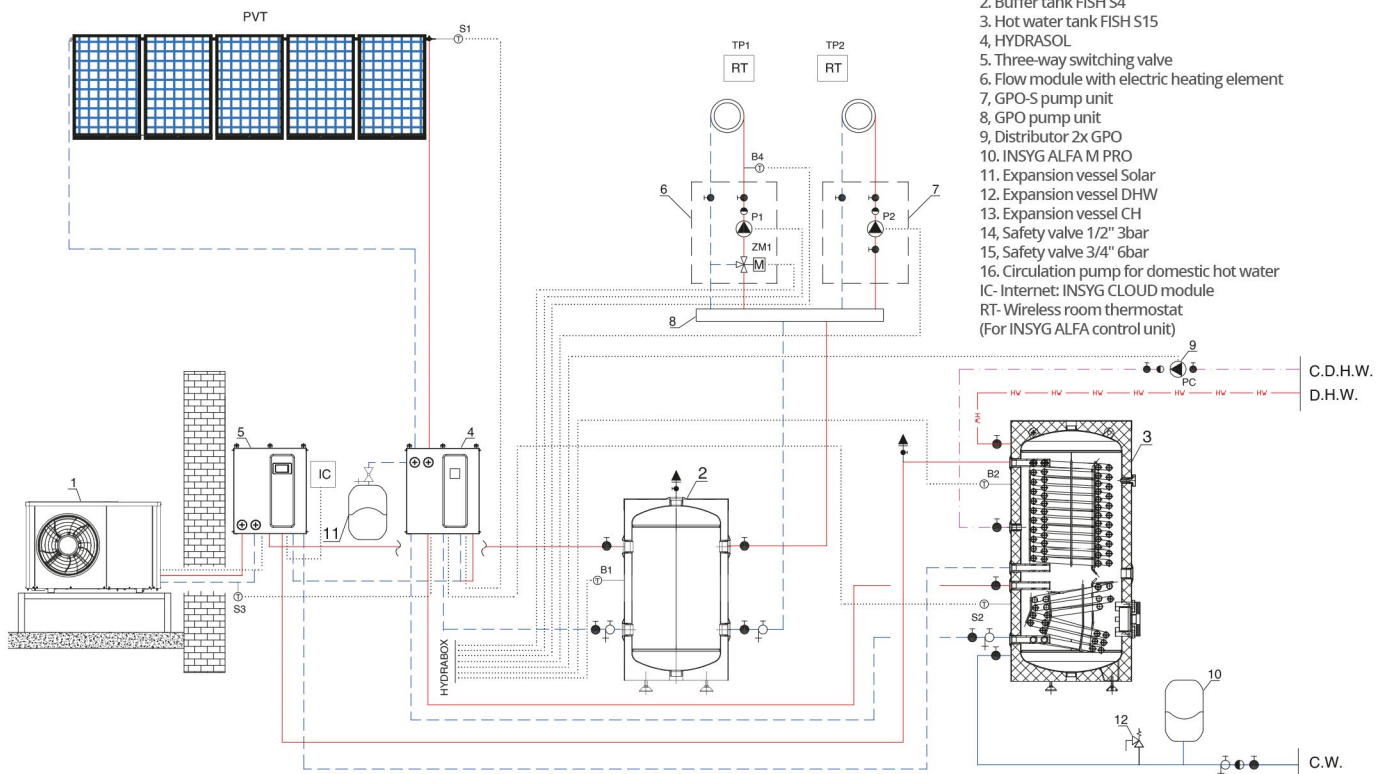
HYDRA SOL - Scheme

1. NEXUS M PRO heat pump
 2. Buffer tank FISH S4
 3. Hot water tank FISH S15
 4. HYDRASOL
 5. Three-way switching valve
 6. Flow module with electric heating element
 7. GPO-S pump unit
 8. GPO pump unit
 9. Distributor 2x GPO
 10. INSYG ALFA M PRO
 11. Expansion vessel Solar
 12. Expansion vessel DHW
 13. Expansion vessel CH
 14. Safety valve 1/2" 3bar
 15. Safety valve 3/4" 6bar
 16. Circulation pump for domestic hot water
- IC- Internet: INSYG CLOUD module
 RT- Wireless room thermostat
 (For INSYG ALFA control unit)

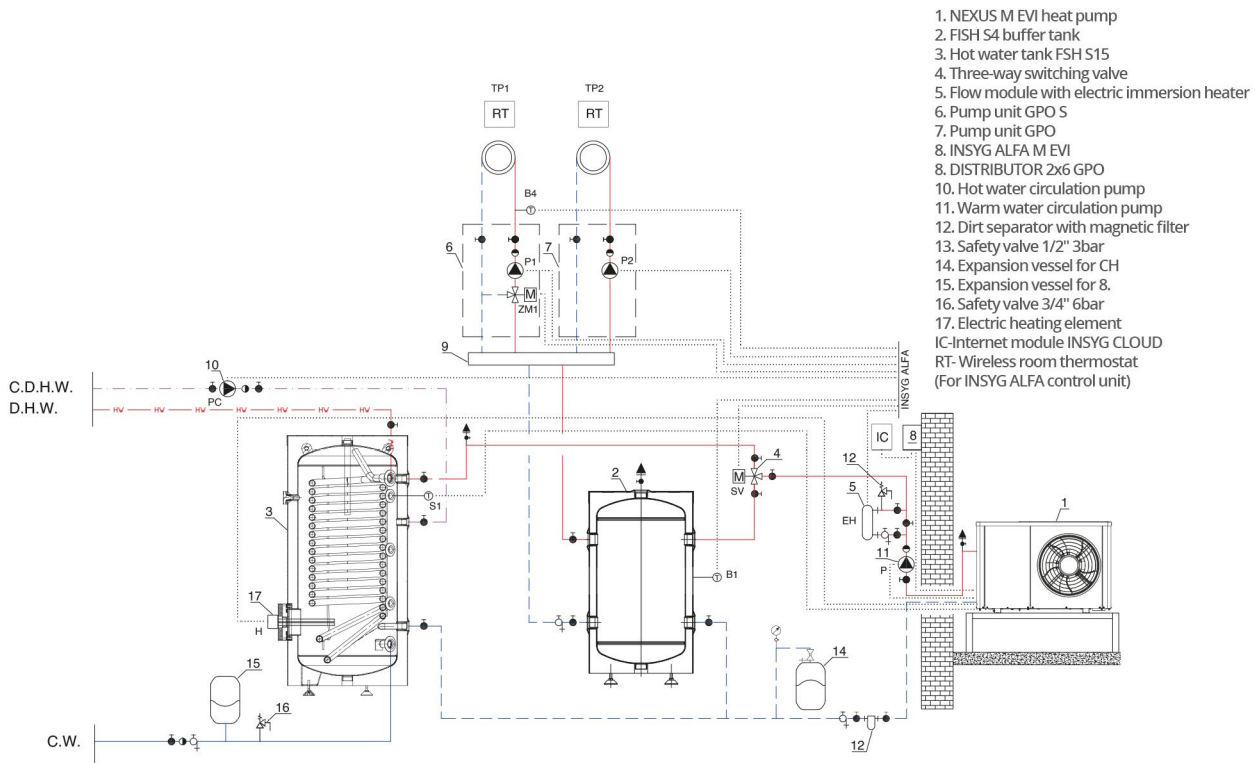


HYDRA BOX + HYDRA SOL - Scheme

1. NEXUS M PRO heat pump
 2. Buffer tank FISH S4
 3. Hot water tank FISH S15
 4. HYDRASOL
 5. Three-way switching valve
 6. Flow module with electric heating element
 7. GPO-S pump unit
 8. GPO pump unit
 9. Distributor 2x GPO
 10. INSYG ALFA M PRO
 11. Expansion vessel Solar
 12. Expansion vessel DHW
 13. Expansion vessel CH
 14. Safety valve 1/2" 3bar
 15. Safety valve 3/4" 6bar
 16. Circulation pump for domestic hot water
- IC- Internet: INSYG CLOUD module
 RT- Wireless room thermostat
 (For INSYG ALFA control unit)

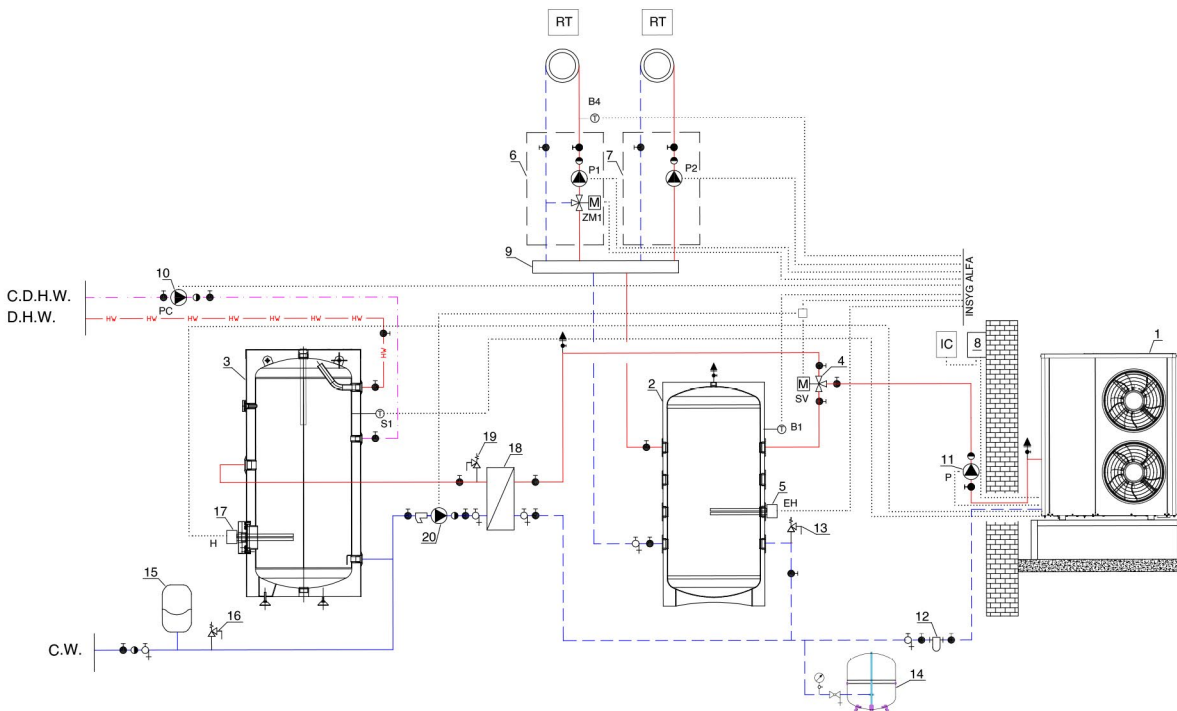


BASIS - SCHEME for M8, M13, M18



1. NEXUS M EVI heat pump
2. FISH S4 buffer tank
3. Hot water tank FSH S15
4. Three-way switching valve
5. Flow module with electric immersion heater
6. Pump unit GPO S
7. Pump unit GPO
8. INSYG ALFA M EVI
8. DISTRIBUTOR 2x6 GPO
10. Hot water circulation pump
11. Warm water circulation pump
12. Dirt separator with magnetic filter
13. Safety valve 1/2" 3bar
14. Expansion vessel for CH
15. Expansion vessel for 8.
16. Safety valve 3/4" 6bar
17. Electric heating element
- IC-Internet module INSYG CLOUD
- RT- Wireless room thermostat
- (For INSYG ALFA control unit)

BASIS - SCHEME for M35

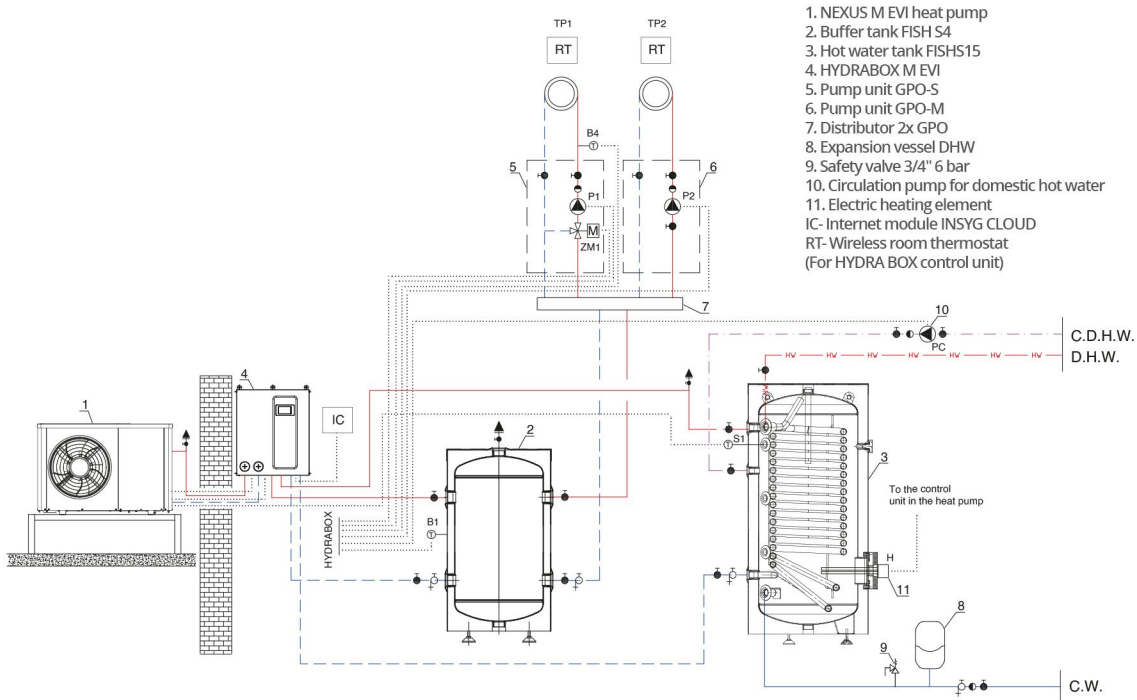


1. NEXUS M EVI heat pump
2. Buffer tank FISH S4
3. Domestic hot water tank FISH S8
4. Three-way switching valve
5. Electric heating element
6. GPO-S pump unit
7. GPO pump unit
8. INSYG ALFA M EVI

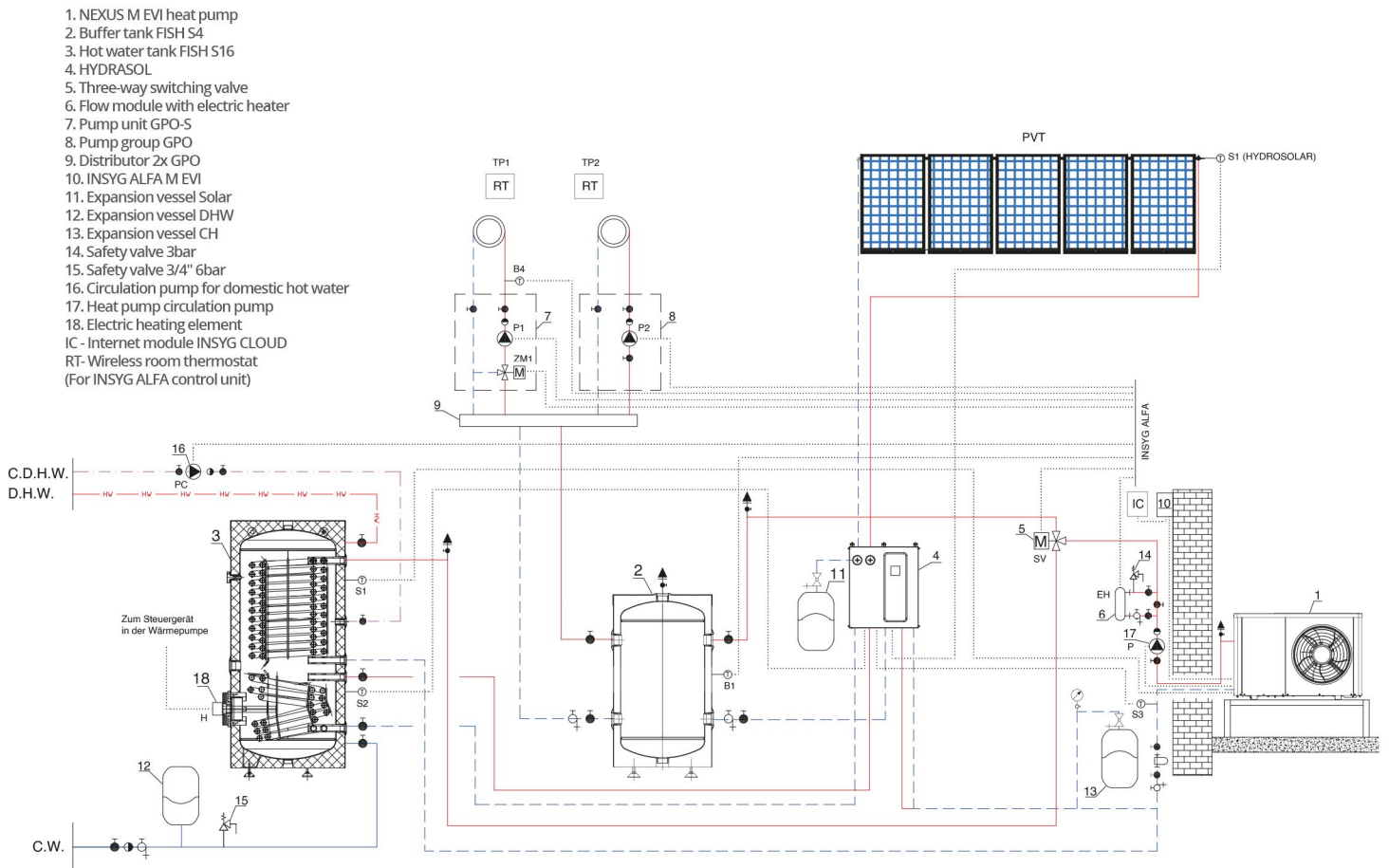
9. Distributor 2xGPO
10. Circulation pump for domestic hot water
11. Hot water pump circulation pump
12. Dirt separator with magnetic filter
13. Safety valve 1/2" 3bar
14. Expansion vessel CH
15. Expansion vessel DHW
16. Safety valve 3/4" 6bar

17. Electric heater
18. Plate heat exchanger
19. Safety valve 6 bar 1/2
20. Secondary circuit pump of the hot water exchanger
- IC- Internet: INSYG CLOUD module
- RT- Wireless room thermostat
- (For INSYG ALFA control unit)

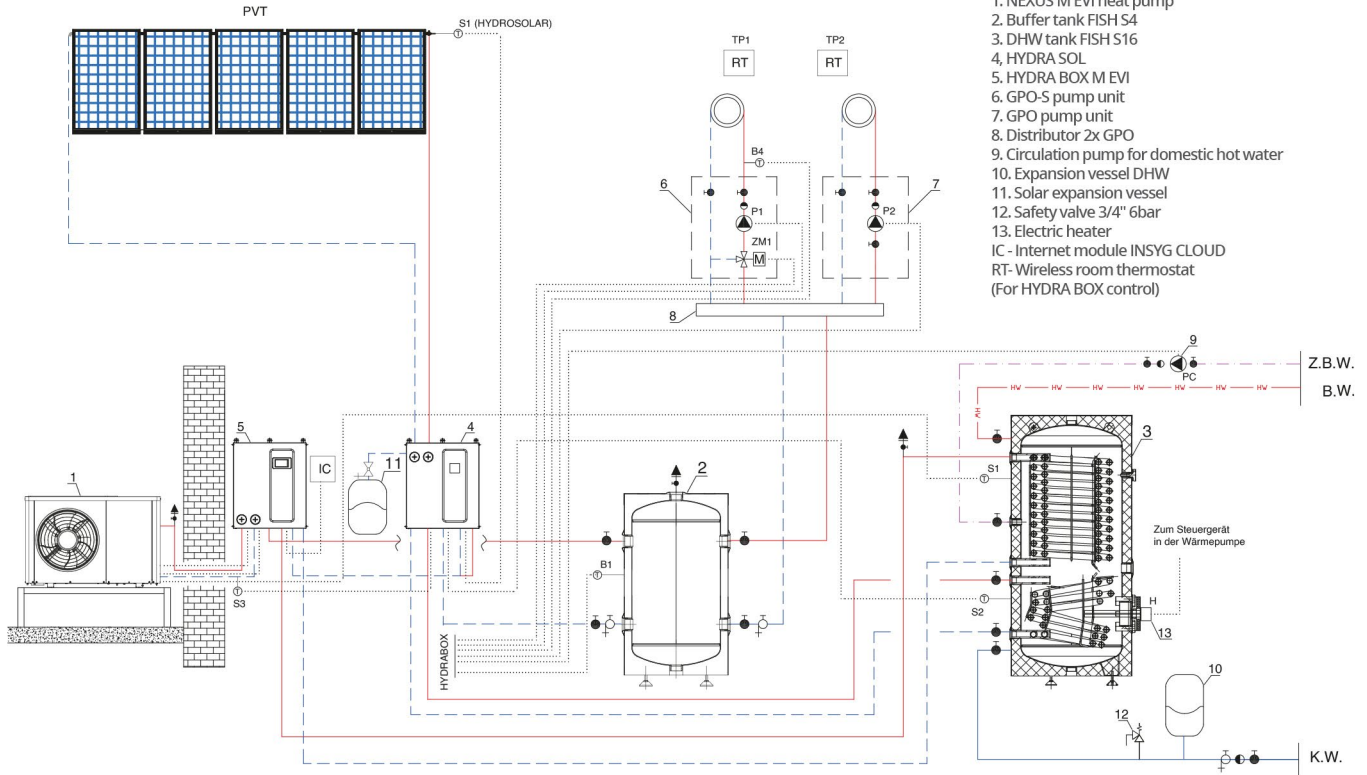
HYDRA BOX - Scheme for M8, M13, M18



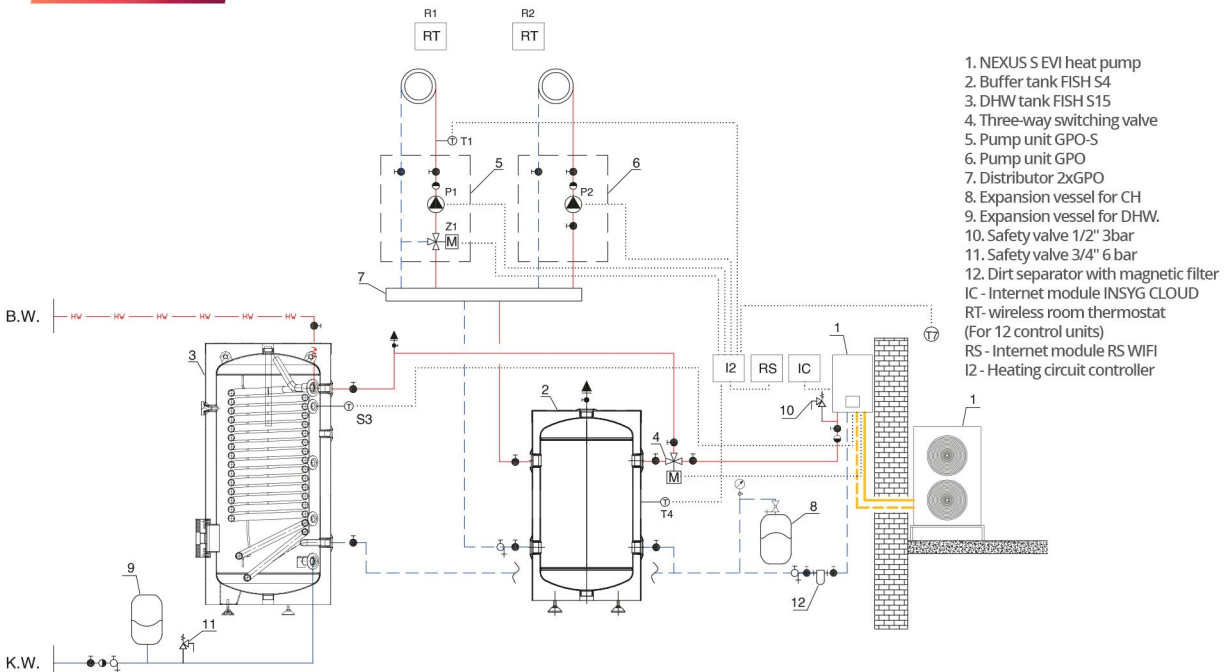
HYDRA SOL - Scheme for M8, M13, M18



HYDRA BOX + HYDRA SOL - Scheme for M8, M13, M18



BASIS - SCHEME



A large grid of small dots for taking notes, covering most of the page.

A large grid of small dots for taking notes, covering the majority of the page.



SUNEX[®]

SUNEX GmbH



+49 3588 2239442



kontakt@sunex-deutschland.de



www.sunex-deutschland.de

